

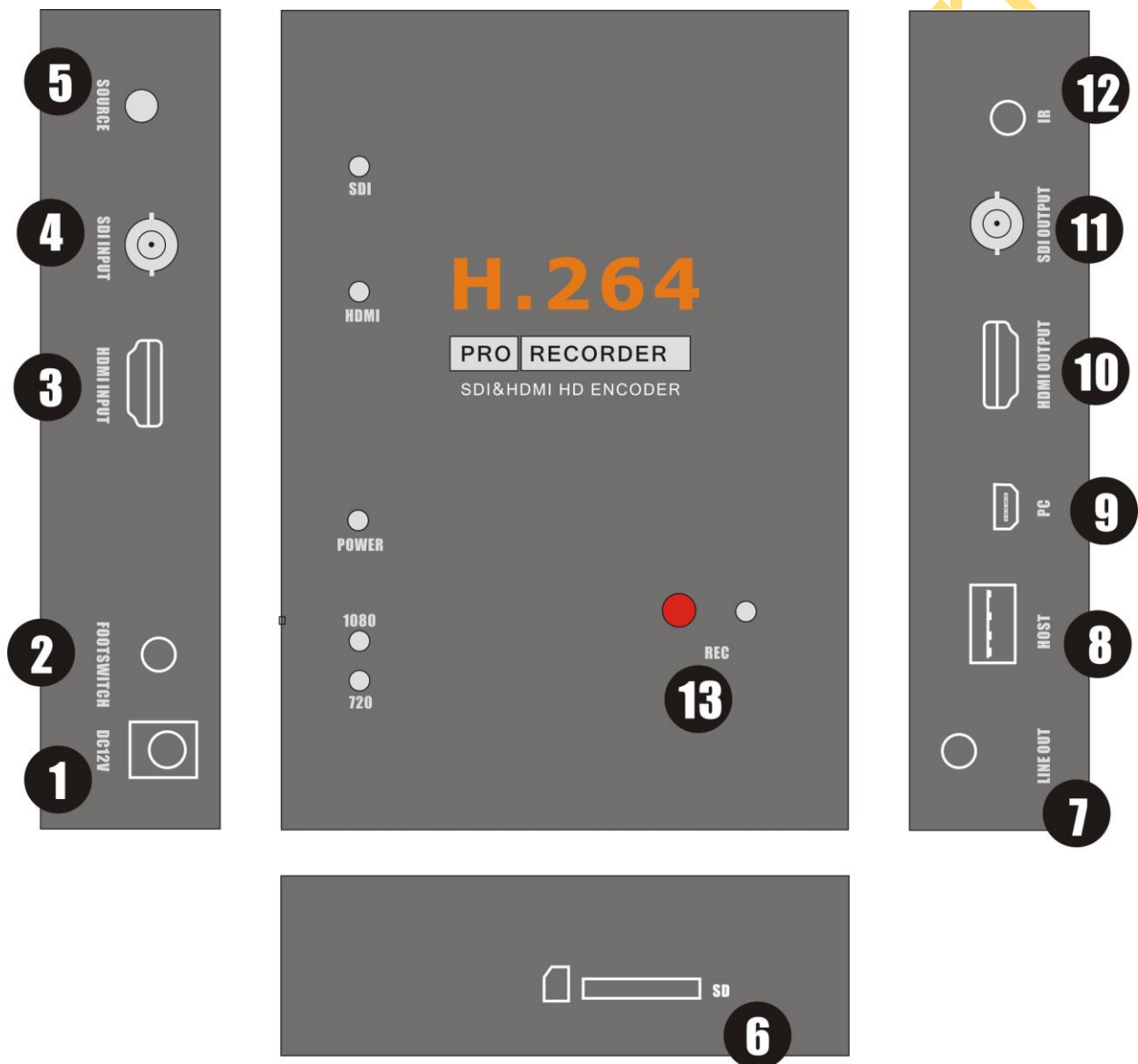
# HD Video Capture

## Quick Start Guide

Thanks for purchasing ezcap286 HD Video Capture. The following guides you how to set up. Hope this device will bring you nice digital experience.

With this ezcap286 HD Video Capture, you can capture up to 1080P video from HD camera with HDMI or SDI port.

### Features/ports and buttons:



1. PWR—DC 12V power supply.
2. FOOTSWITCH—3.5mm port to connect footswitch to capture video.
3. HDMI INPUT—HDMI input.

---

4 SDI INPUT—SDI input.

5 SOURCE—Switch button to choose the video source between SDI and HDMI.

6 SD—SD slot, for plug SD card(only support FAT32 format) to save video files.

7 LINE OUT—Audio line out.

8 HOST—USB host, for plug USB flash or HDD to save video files.

9 PC—to connect to PC.

10 HDMI OUTPUT—By pass the input video source (for both SDI and HDMI) to monitor.

11 SDI OUTPUT—Loops out the input SDI (not for HDMI) to monitor.

12 IR—for connect the IR expand cable for IR remote.

13 REC—Press to record, press again to stop recording.

#### LEDS:

SDI(yellow)—Will be on when power on. Will be off if switched to HDMI input.

HDMI(yellow)—Will be on when switched to HDMI input.

POWER(green)—Will be on when power on.

720(yellow)—Will be on when under 720P recording mode (set by remote controller).

1080(yellow)—Will be on when under 1080P recording mode (set by remote controller).

REC(red)—Will be on when recording video, will be flash 1 time when capture image.

### Remote controller:

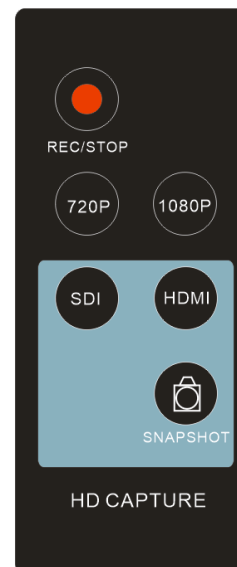
REC/STOP—Start and stop recording.

720P—Change record quality to 720P, only effect when  
Input source is more than 720P

1080P—Change record quality to 1080P, only effect  
when input source is 1080P

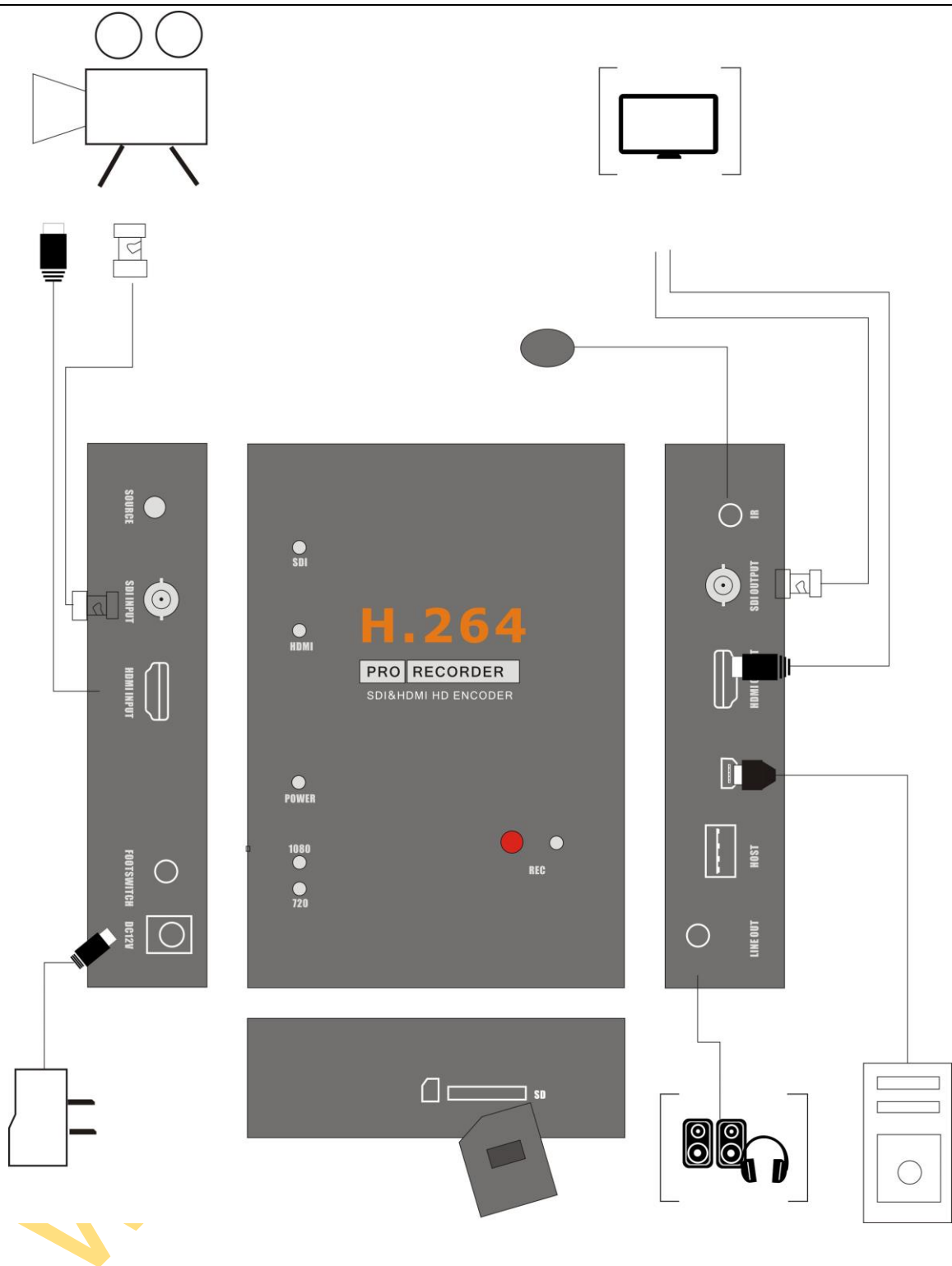
SDI/HDMI—Select input source.

SNAPSHOT—To capture one still image with one press  
Won't work during recording.



### Connections:

Ezcap286 have 2 input modes: HDMI, SDI . The default source is SDI. You need press “SOURCE” button to switch to HDMI if you are connecting a HDMI source.



1, Connect power with DC adaptor, by DC12V or DC5V, you also can connect PC/DC5V to PC with USB cable, but please don't power together. And power LED and SDI video source LED will light.

2, Plug an USB disk or SD card, just don't connect together.

3, Connect SDI camera or HDMI camera or other HDMI video source to HDMI input port.

4, With HDMI cable or SDI cable connect HDMI OUTPUT or SDI OUTPUT to monitor. **Please use HDMI OUTPUT to monitor if you input HDMI video source.**

---

5, The "LINE OUT" is for connect to speaker or earphone, it's not necessary if you don't need, cause the HDMI output also with audio output.

## Record:

After connection is ready, you should see the pass through video on the screen. You will see the blue power indicator on.

The source LED (orange) will be on default at SDI side, means only SDI input will be pass through and recording. **You can press "SOURCE" button or remote controller to change the input source to HDMI if you want to input one HDMI video source.**

To record video is very simple --- press the record button (or remote controller), then you will see the REC indicator turns on, it means now recording.

Use SNAPSHOT button of remote controller, you can get a still image by one press, but it is only work when NOT recording.

There are several reasons for no actions when press record button, you may need check:

- 1, The input video source disconnected.
- 2, The USB flash (or SD card) is out of memory.
- 3, The format for USB flash (or SD card) is not suitable, e.g. exFAT. Ezcap286 supports FAT, FAT32, and NTFS for USB flash, and only FAT32 for SD card.
- 4, The USB flash (or SD card) is not connected well.
- 5, The USB flash (or SD card) is not ready, normally, it will take 4~8 seconds after plug it on.

To stop recording, just press REC button again, will see REC indicator flash few seconds then turns off, means the record is stop, now you can take off your USB flash (or SD card).

**Note:** please do not take the memory off when the indicator is flashing. The recording will automatically stop if the USB flash (or SD card) out of space.

After stop recording, connect the USB flash to computer will see the recorded files: for 1080P recording, file will be Encode\_1080P\_1, for 720 or 480p recording, file will be Encode\_1.

Every record/stop operation will create a different recording file: Encode\_1080P\_1, Encode\_1080P\_2, Encode\_1080P\_3... and so on.

The max size per file will be around 1.95GB (around 15 minutes for 1080p video), when you record a video more than 1.95GB(15 minutes), ezcap286 will partition it in more than 1 file, for example: if you record a 45 minutes 1080p video by one click recording, you will see 3 files: Encode\_1080P\_1, Encode\_1080P\_1\_1, Encode\_1080P\_1\_2...and so on

Sometimes you may find that some recorded video with problems, like: skip. It may caused by you are using a USB flash on NTFS format, and you haven't click "safety remove" the device when

disconnect from computer (especially for USB HDD, if not safety remove, may caused serious problem). You can try to format it to FAT32 if that problem keeps happen.

## Firmware and others:

1, Update firmware: you maybe need update firmware for this device for some reason. Copy the firmware file in to USB disk or SD card, power off the device (unplug power jack), plug USB disk to device, power on, the indicator will flash 7~8 seconds, and become blue, it means the update is finished.

2, After long time using, you will see the number of recording file become too big, for example Encode\_1080P\_234, but you want it be start from Encode\_1080P\_0, to do it you just keep press record button (before power on), then plug the power jack to power on the device, after 3 seconds, the file number will start from 0.

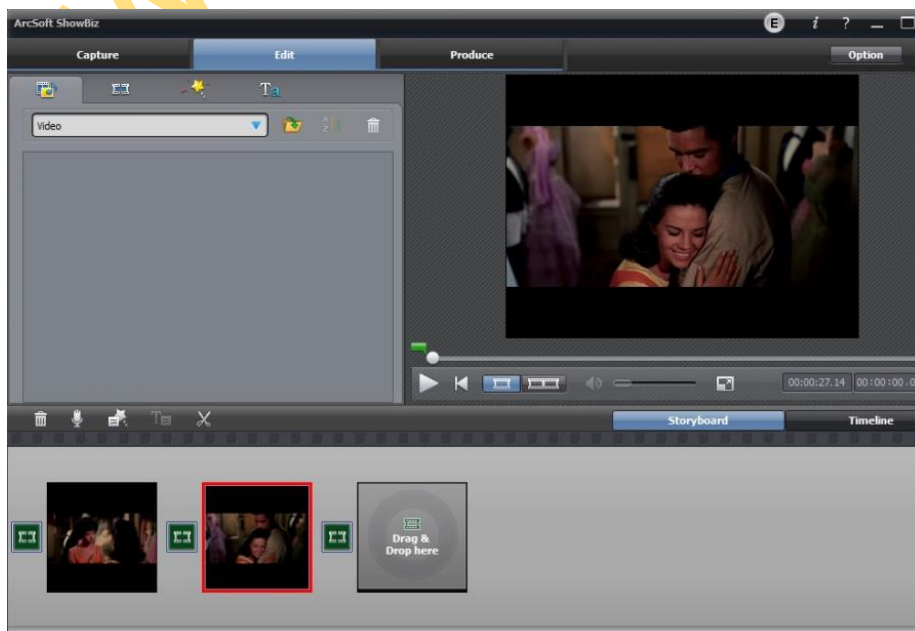
3, Change the date: you may find out that the date of the recorded file is not synchronous with your local time. To change the time of ezcap286, you need create a TXT file name "rtc\_setup" (It should be in including software CD) , type your local date and time with following format (for 2014 July 31 11:00:00):

```
/:2014
/:7
/:31
/:11
/:00
/:00
/:0
```

Should be exactly same format as it (first line be year, second line be month..etc, end with /:0 , each line with start "/:"), and save it.

Then copy the rtc\_setup file to a SD card or USB flash, connect to ezcap286 then power on, then the time is set ready.

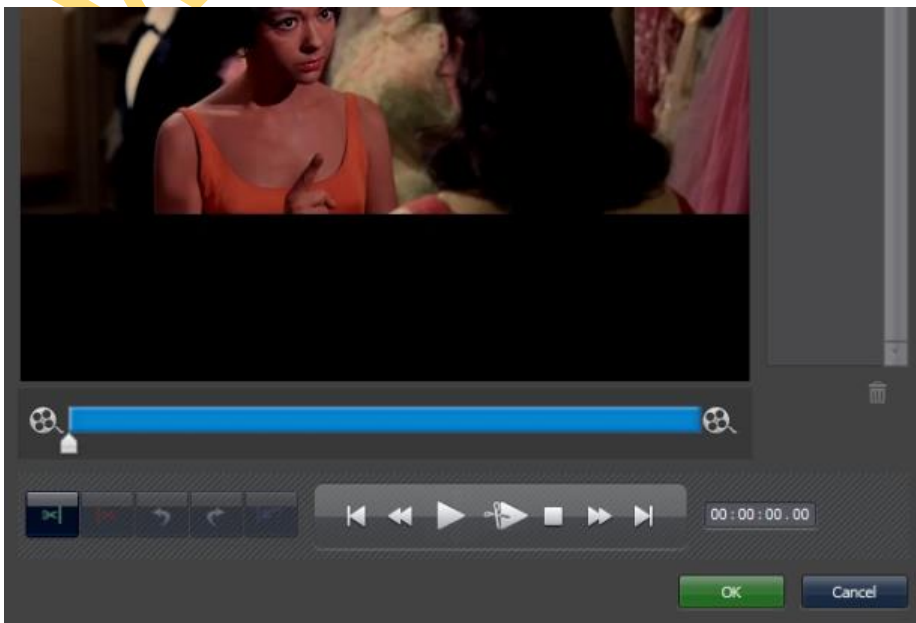
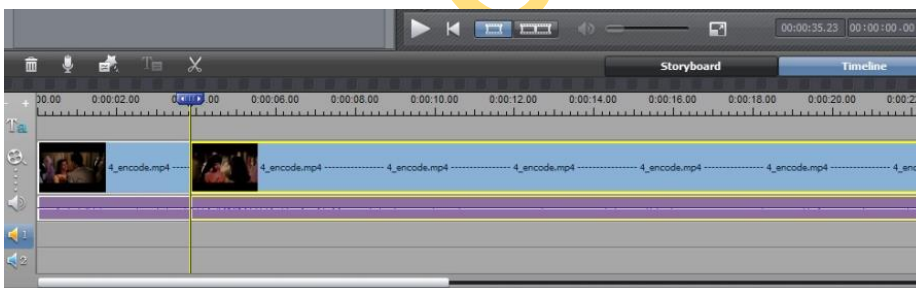
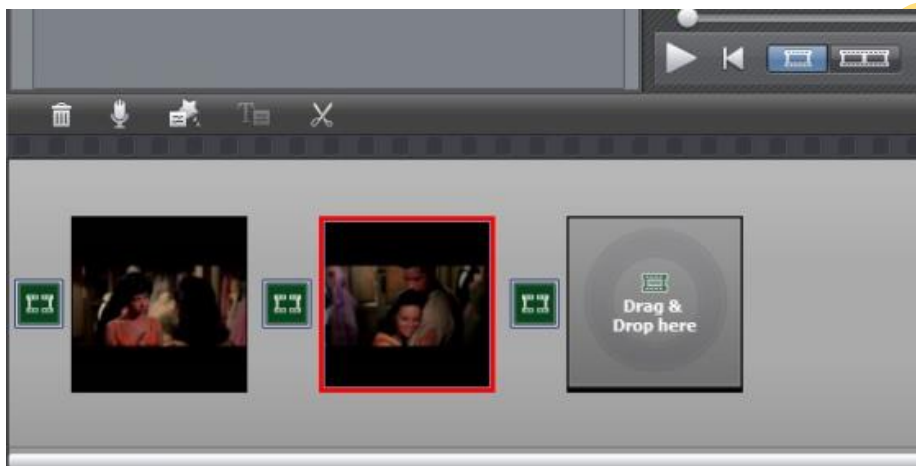
## Edit/Convert recorded files:



The ezcap286 come with a video edit software—Arcsoft ShowBiz 3.5, you can edit your video file with it.

After install it on computer, and open it.

1, You can combine two or more video in one, just drag them into Showbiz:



2, You can cut a video to two or more:

3, Click "Produce" after editing, you can create DVD or upload video to YouTube:



4, Please click "Create file" to create multiple files for different devices, such as apple, PSP, mobile phone, etc:



---

## Specifications:

### Connections

|              |  |
|--------------|--|
| Interface    | USB 2.0 Host, SD card slot   |
| Video Input  | Digital: HDMI, SDI   |
| Audio Input  | Digital: HDMI, SDI   |
| Video Output | Digital: HDMI (Pass-through from HDMI or SDI), SDI (pas- through from SDI only). |
| Audio Output | Digital: HDMI (Pass-through from HDMI or SDI), SDI (pas- through from SDI only). |
|              | Analog: 3.5mm Stereo (Pass-through from HDMI or SDI).                            |

### Applicable Connections with Game Consoles

|      |   |
|------|---|
| HDMI | Industry HD camera, HD Medical endoscope, HD camcorder, gameplay, etc |
| SDI  | Industry HD camera, HD Medical endoscope, HD camcorder                |

**Note:** HDCP contents cannot be recorded.

### Hardware Extra



|                       |  |
|-----------------------|--|
| <b>Codec</b>          | Hardware H.264 encoder                           |
| <b>User Interface</b> | Record button, source switch button,             |
|                       | 3.5mm Foot switch port.                          |
|                       | LED indicator for working status.                |
|                       | infrared 3.5mm expand port for remote controller |
| <b>Dimensions</b>     | 143(L) × 102(W) × 26(H) mm                       |
| <b>Weight</b>         | 420g   |

### Package Contents

|               |  |
|---------------|--|
| <b>Device</b> | ezcap286 HD Video Capture  |
| <b>Others</b> | DC adaptor (12V3A) , remote controller, remote expand cable, Software CD, Manual |

### Standards

|                       |  |
|-----------------------|--|
| <b>Storage Media</b>  | USB Flash Disk, Portable Hard Disk, SD card  |
|                       | Max Capacity: USB / 2T, SD / 64GB  |
|                       | <b>Note:</b> The exFAT format is not supported.  |
| <b>Resolution</b>     | <b>Input / Pass-through:</b><br>720 x 480 (60p), 720 x 576 (50p), 1280 x 720p (50p), 1280 x 720p(60p), 1920 x 1080 (50i), 1920 x 1080 (60i), 1920 x 1080 (24p), 1920 x 1080 (25p), 1920 x 1080 (30p), 1920 x 1080 (50p), 1920 x 1080 (60p) |
|                       | <b>Capture:</b><br>720 x 480 (60p), 720 x 576 (50p), 1280 x 720p (50p), 1280 x 720p(60p), 1920 x 1080 (50i), 1920 x 1080 (60i), 1920 x 1080 (24p), 1920 x 1080 (25p), 1920 x 1080 (30p), 1920 x 1080 (25p), 1920 x 1080 (30p)              |
|                       | <b>Note:</b> Up scaling is not supported.  |
| <b>Record Format</b>  | Video: MP4, Audio: AAC Stereo  |
| <b>Record Quality</b> | Max: 18Mbps@1080P 30fps  |
| <b>Record File</b>    | Max: 2GB / Per File, With RTC (Real Time Clock)  |

|                     |                                   |
|---------------------|-----------------------------------|
| <b>Record Place</b> | Max: 140MB / Minute, 8.4GB / Hour |
| <b>Power Supply</b> | DC 12V / 3A, or USB 5V/2A         |

## Applications

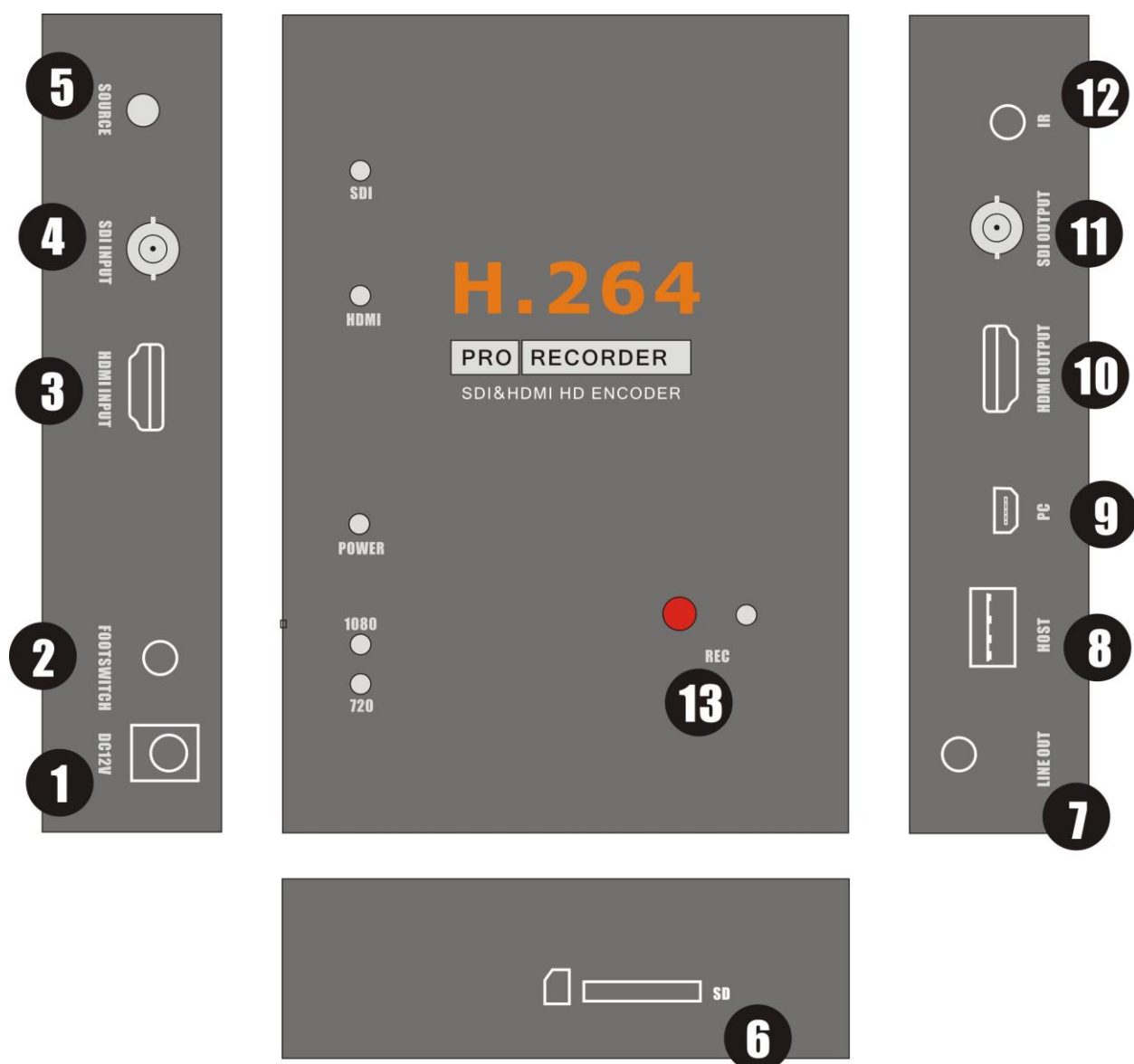
|                         |   |
|-------------------------|---|
| <b>Software</b>         | Arcsoft Showbiz   |
| <b>Video Editing</b>    | Timeline / Storyboard edit, Split / Divide Scenes, Multi Trim Scenes ...      |
| <b>Video Export</b>     | Upload to YouTube   |
|                         | Portable Device: iPod, iPhone, iPod Touch, Apple TV, PSP, PS3, Xbox           |
|                         | File: MPEG 1 / 2 / 4, WMV HD, Quicktime (MOV) ...                             |
| <b>Operating System</b> | Windows 8 (32 / 64 bit), Windows 7 (32 / 64 bit), Windows Vista (32 / 64 bit) |
| <b>CPU</b>              | Intel Core 2 Duo 2.8GHz, AMD Athlon 64X2 Dual Core 3.0GHz                     |
| <b>Memory</b>           | 4 GB RAM  |
| <b>Graphics Card</b>    | VGA card with support for DirectX 10.0c or above                              |

# 高清视频采集盒使用说明手册

感谢您购买使用我司 **ezcap286** 高清视频采集盒，手册将会说明该设备的使用场合、连接、设置和如何使用，希望这款产品能够带给你美好的使用体验。

使用 **ezcap286** 高清采集盒，你可以将 **HDMI**、**SDI** 视频直接录到 **U 盘**或 **SD 卡**，采集的视频文件最高达到 **1080P** 的分辨率。

## 外观、接口、按键和指示灯：



1. PWR—直流 12 伏 3 安 电源接口.

2. FOOTSWITCH—脚踏开关接口（用于录制）

3. HDMI INPUT—HDMI 输入端口.

4. SDI INPUT—SDI 输入端口.

5. SOURCE—在 SDI 和 HDMI 之间选择不同的视频源输入.

6. SD—SD 卡插槽, 插入 SD 卡（仅支持 FAT32 格式）并保存录制文件.

7. LINE OUT—音频线路输出.

8. HOST—USB 接口, 插入 U 盘或移动硬盘并保存录制文件.

9. PC/DC5V—用于连接电脑供电或迷你 USB 的 5V/2A 直流电源.

10. HDMI OUTPUT—HDMI 输出端口, 用于连接电视机或显示器来显示视频源影像(支持 HDMI 或 SDI 输入).

11. SDI OUTPUT—SDI 输出端口, 用于连接电视机或显示器来显示视频源影像(仅支持 SDI 输入).

12. IR—用于连接遥控延长接收线进行遥控.

13. REC—按下开始录制,再次按下停止录制.

## 遥控器:

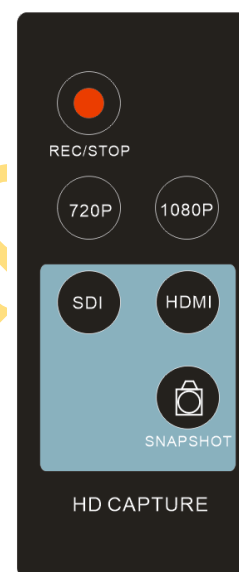
REC/STOP —录制/停止按键, 按下开始录制, 再按即停止录制

720P — 切换录制文件分辨率为 720P, 在输入源分辨率超过 720P 情况下生效

1080P — 切换录制文件分辨率为 1080P, 在输入源分辨率为 1080P 情况下生效

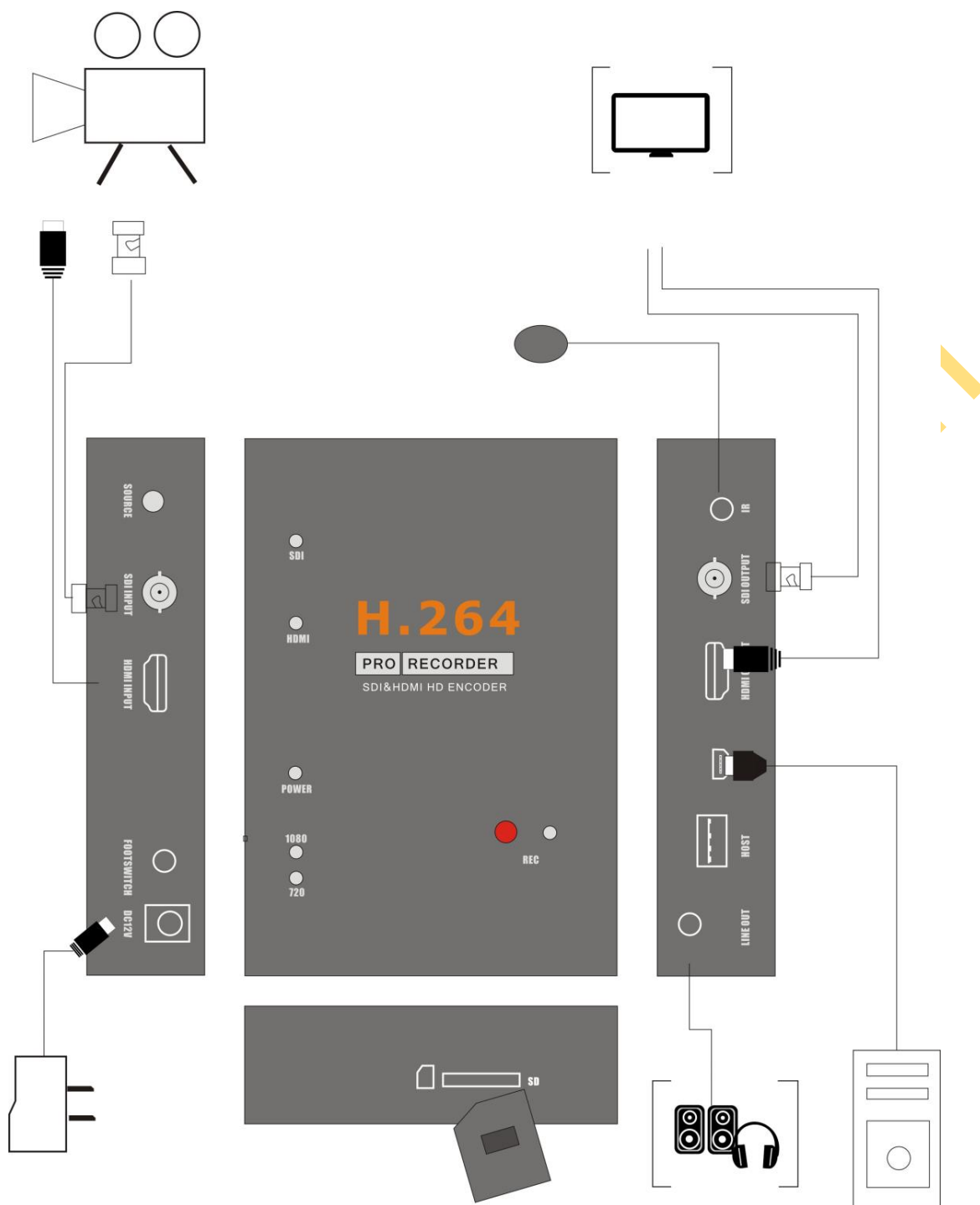
SDI/HDMI — 选择输入视频源

SNAPSHOT — 不工作于录制状态下抓图



## 产品连接:

ezcap286 有两个输入模式: HDMI 和 SDI, 默认输入源为 SDI. 如果你连接 HDMI 输入源, 则需要按下“SOURCE” 按键去切换到 HDMI 输入源模式.



1, 连接 DC12V 或 DC5V 直流电源, 也可以用 USB 线材连接电脑获取电源, 但不要同时连接他们. 此时电源指示灯和 SDI 输入源指示灯会亮起.

2, 插入 U 盘到 USB 接口, 或插入 SD 卡到卡槽, 请不要同时插入.

3, 连接 SDI 高清摄像机或其它 SDI 输出设备到 SDI 输入端口, 或者连接 HDMI 游戏机或其它 HDMI 输出设备到 HDMI 输入端口, 请不同同时连接 SDI 和 HDMI 输入端口.

4, 用 HDMI 线材将 HDMI 输出端口和 HDMI 显示器连接, 或者用 SDI 线材将 SDI 输出端口和 SDI 显示器连接, 请不同同时连接 SDI 和 HDMI 输出端口. 如果输入 HDMI 视频源, 请仅仅连接 HDMI 输出端口到 HDMI 显示器, 此时不支持 SDI 输出.

5, “LINE OUT” 音频输出端口用于连接耳机或音箱,如果你不需要则无需连接,因为 HDMI 或 SDI 输出已经包含音频输出。

## 录制:

连接好后,你一定可以在电视或显示器上获得影像和声音,同时蓝色指示灯常亮,现在伊卡普采集盒已经准备好录制了。

橙色视频源指示灯默认 SDI 输入这边,表示 SDI 输入视频会被显示和录制。如果你想切换到 HDMI 输入源,可以按下“SOURCE”键或者通过遥控器去切换到 HDMI 输入源状态,然后 HDMI 输入源这边的橙色指示灯将会点亮,表示 HDMI 输入视频将会被显示和录制。

录制非常简单,只要你轻轻按下录制按键(或通过遥控器),你看到录制指示灯亮起,这就代表已经开始录制了。

通过遥控器上的 SNAPSHOT 按键你可以抓取到图片,不过在录制期间将不会动作。

如果按下录制键,指示灯没有变化的话,或许有如下几种原因,请确认:

- 1, 输入的视频源没有连接好
- 2, U 盘、移动硬盘容量已满
- 3, U 盘、移动硬盘的格式不适合,比如 exFAT 格式。伊卡普采集盒支持 FAT、FAT32 和 NTFS 格式的 U 盘(移动硬盘), FAT32 格式的 SD 卡。
- 4, U 盘、移动硬盘没有插好
- 5, U 盘、移动硬盘或 SD 卡还没有准备好,一般插入后需要 4~8 秒的时间

如果要停止录制,你只需再次轻按录制按键,你将会看到 LED 指示灯闪烁几下然后熄灭,这时说明已经停止录制,你可以拔下 U 盘或 SD 卡了。

**注意:** 当 LED 指示灯闪烁时,请不要拔下 U 盘或 SD 卡,否则有可能会丢失部分录制文件。如果 U 盘录制满,伊卡普采集盒会自动停止录制,不会损坏或丢失之前的录制文件。

将存有录制文件的 U 盘与电脑连接,你将会看到视频录制文件: 1080P 的录制文件,文件名为 Encode\_1080P\_1, 720 或 480 录制文件为 Encode\_1。

每一次录制/停止的操作,伊卡普采集盒都会新建一个不同的录制文件: Encode\_1080P\_1、Encode\_1080P\_2、Encode\_1080P\_3...

每一个文件最大约为 1.95GB (1080p 视频文件约 15 分钟),当你录制视频超过 1.95GB,伊卡普采集盒会自动保存为一个文件,并继续录制。举例:当你按一次录制键并准备录制 50 分钟左右的 1080P 的视频,那你将会得到四个文件: Encode\_1080P\_1, Encode\_1080P\_1\_1, Encode\_1080P\_1\_2...前面三个文件分别为 1.95GB,时长分别约 15 分钟,而第四个文件时长约 5 分钟。

**注意:** 一些时候你会发现录制文件播放时有遗漏,那或许是因为你使用的是 NTFS 格式的存储设备,且你最后从电脑拔出时没有点击“安全退出”。如果你尝试安全退出还是没有解决这个问题,请试着将存储设备格式为 FAT32 格式并再次尝试。

## 设备固件程序及其它:

1, 程序升级: 因为一些原因你或许需要升级程序。 请将新的程序拷贝到 U 盘或 SD 卡内, 将伊卡普采集盒电源拔掉, 插上 U 盘或 SD 卡, 再接上电源, 这时指示灯将会闪烁七八秒, 并最终变成蓝色常亮, 这时表示软件升级成功。

2, 伊卡普采集盒长时间使用后, 你将会看到录制文件名的数值越来越大, 比如 **Encode\_1080P\_234**。如果你觉得不太好管理, 而想从 **Encode\_1080P\_0** 开始的话, 请在伊卡普采集盒接电前长按录制按键, 并接上电源, 大概三秒后, 文件名将会清零。

3, 伊卡普采集盒有 RTC 实时时钟功能, 可以显示录制的实际时间, 同时你也可以根据你当地的时间来设定。 你需要新建一个 TXT 文档, 并命名为“rtc\_setup”。 按照下述格式写下当地的日期和时间。(比如 2014 年 7 月 31 日 11 点 0 分 0 秒)

```
/:2014  
/:7  
/:31  
/:11  
/:00  
/:00  
/:0
```

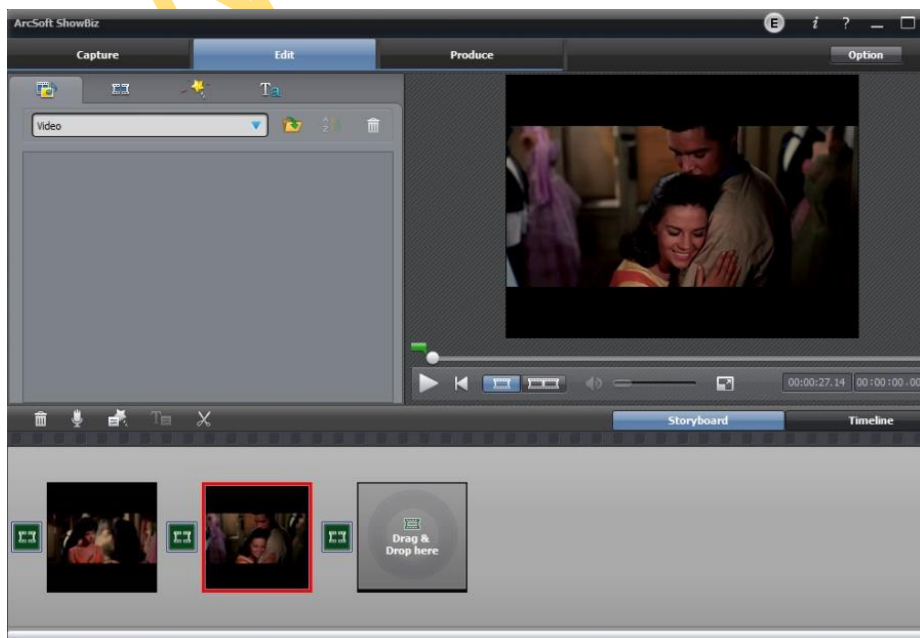
一定要严格的按照这个格式列好, 第一行是年, 第二行是月, 以此类推, 最后一行是 0, 且每一行的前面都是/, 写好后保存。

将文件拷贝到 U 盘或 SD 卡, 伊卡普采集盒断电, 插上 U 盘或 SD 卡, 然后上电, 这样时间就设定好了。 你可以通过录制的文件属性来验证时间是否设定正确。

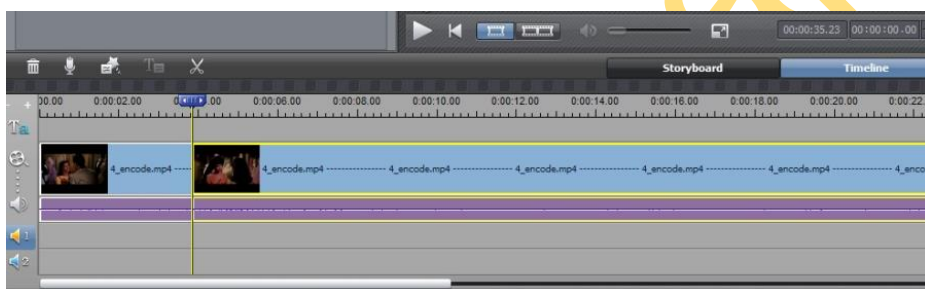
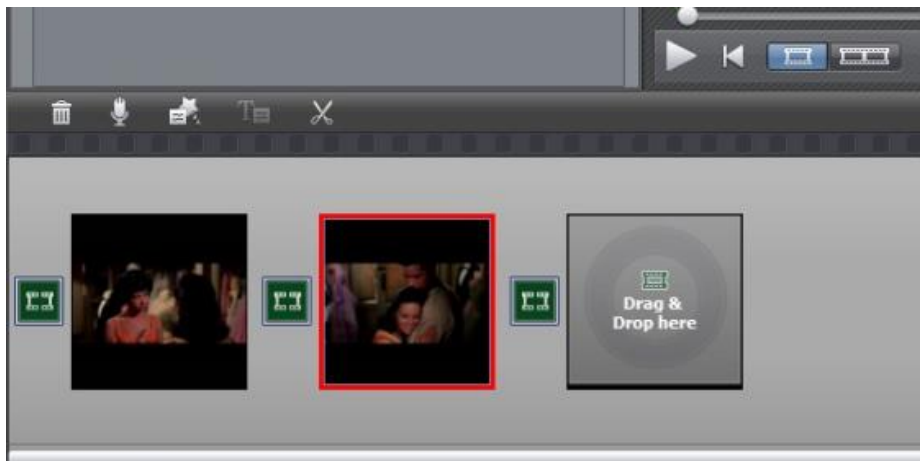
## 编辑、转换录制的视频文件:

伊卡普采集盒有配送超豪华的视频编辑转换软件, 你可以用来编辑转换录制的视频文件。。

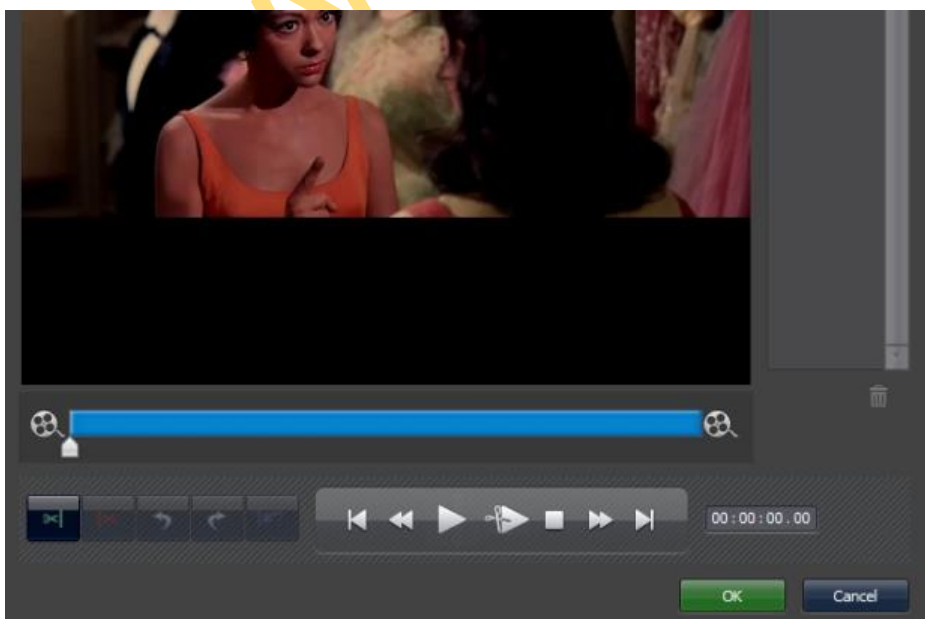
将附送的软件 CD 放入光驱, 并点击安装(序列号在光盘袋背后), 安装完成后, 双击界面打开。



1, 你可以将两个录制文件合并成一个文件, 仅仅将需要合并的文件拖进软件界面即可。



2, 你可以将一个文件分割为两个或者更多。





3, 完成编辑后点击 “Produce”制作，你可以存为你想要的任何格式的文件，或者上传到你的 YouTube 账户：



4, 点击 “Create file” 你可以将编辑好的视频文件保存为各种不同设备适合的文件格式，比如苹果设备、PSP 及其它。



规格参数:

接口连接

|      |   |
|------|---|
| 界面   | USB 2.0, SD 卡                                       |
| 视频输入 | 数字: HDMI,SDI  |
| 视频输出 | 数字: HDMI,SDI  |
| 视频输出 | 数字: HDMI (通过 HDMI 或 SDI 输入获得), SDI (仅可通过 SDI 输入获得). |
| 音频输出 | 数字: HDMI (通过 HDMI 或 SDI 输入获得), SDI (仅可通过 SDI 输入获得). |
|      | 模拟: 3.5mm 立体声 (通过 HDMI 或 SDI 输入获得)                  |

接口应用

|      |                               |
|------|-------------------------------|
| HDMI | 工业高清相机摄像机, 高清医疗内窥镜, 机顶盒, 游戏机等 |
| SDI  | 工业高清相机摄像机, 高清医疗内窥镜等           |

注意: 具有 HDCP 保护视频将不允许录制.

硬件规格

|      |                            |
|------|----------------------------|
| 编码器  | H.264 硬件编码                 |
| 用户界面 | 录制按键, 视频源选择按键              |
|      | 3.5 毫米脚踏开关接口               |
|      | 工作指示灯                      |
|      | 3.5 毫米红外接收端口, 用于连接扩展延长线    |
| 尺寸   | 143(长) × 102(宽) × 26(高) 毫米 |
| 重量   | 420 克                      |

包装内容

|        |                                  |
|--------|----------------------------------|
| Device | ezcap286 高清采集盒                   |
| Others | 12V3A 直流电源适配器,遥控器,遥控延长线,软件光盘,说明书 |

www.ezcap.com