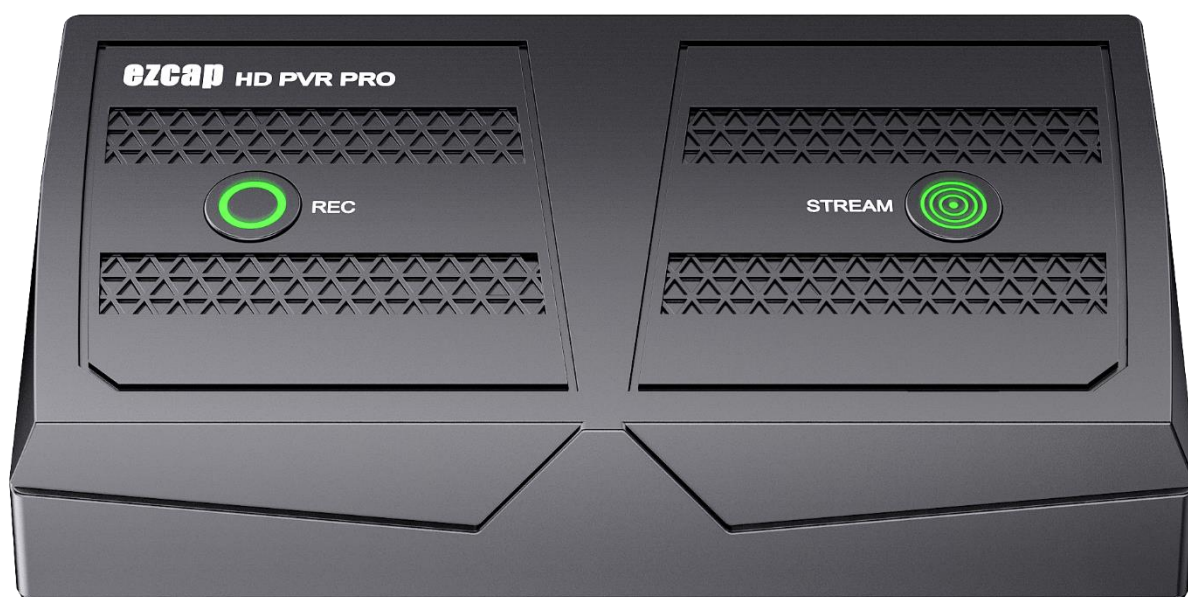




# HD PVR Pro

## manual



Thanks for purchasing **ezcap350 HD PVR Pro**. Please read this manual before use and keep it in a safe place for future reference.

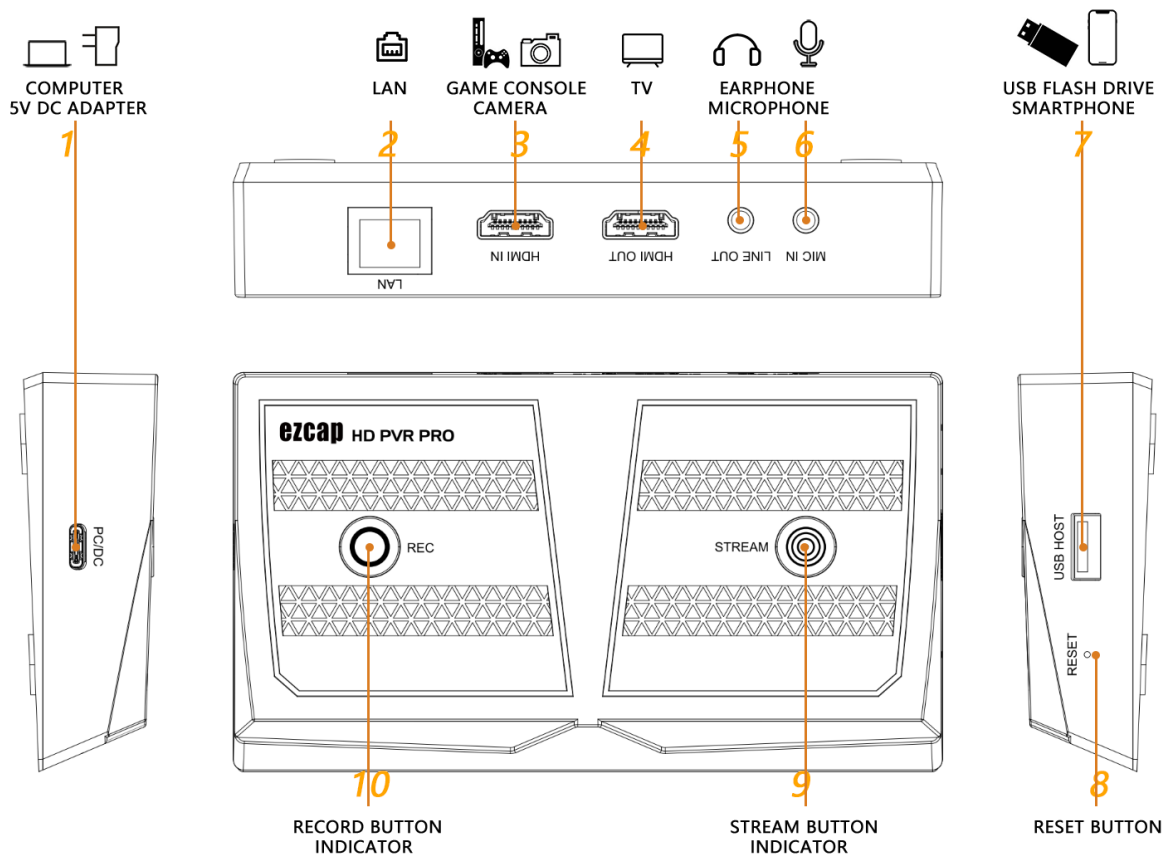
You can use this device: Input and pass-through 4Kp60 HDR HDMI video, record video and save in USB flash drive up to 1080p60 resolution, stream live 1080p video on Facebook, YouTube and more with network bonding and H.264 compression, capture and stream live 1080p video by software on computer, Capture and stream smartphone video by software on computer.

## Overview

### In the Box

ezcap350 HD PVR Pro x1, Manual x1, USB Cable x1, USB adapter x1.

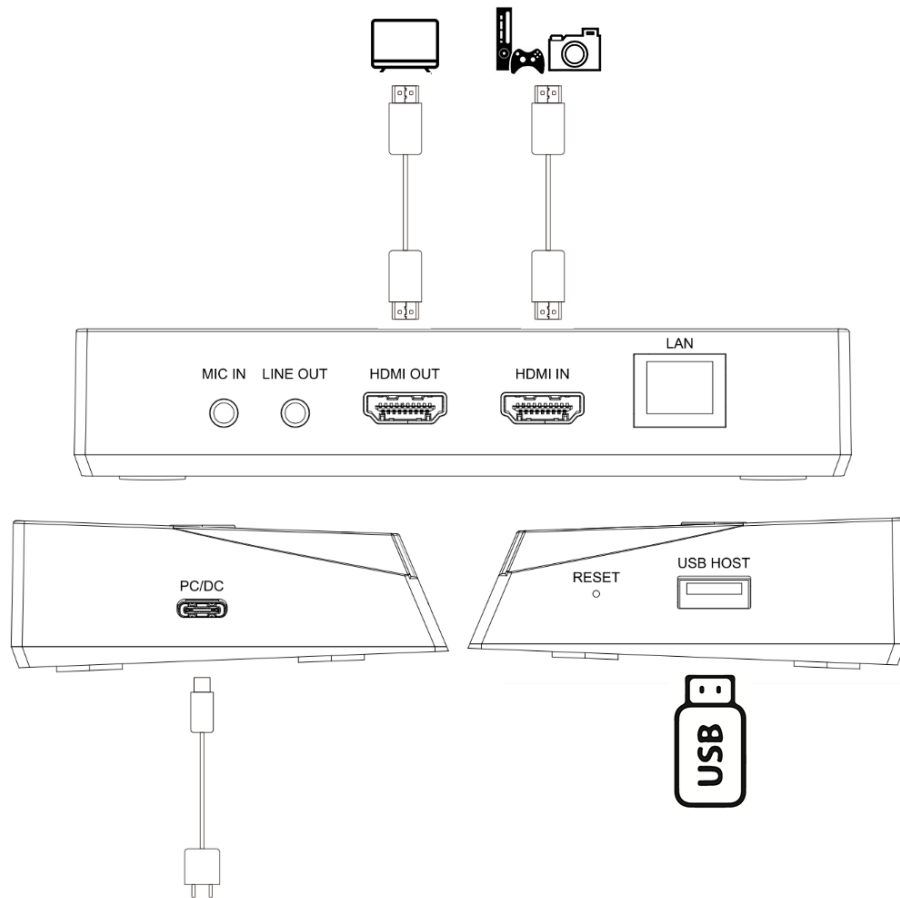
### Product Overview and Connections



1. **PC/DC** – USB-C port, connect to 5V2A USB power supply, or connect to computer USB3.0 port to capture and streaming video by software.
2. **LAN** – Network port, connect to network to streaming video. Indicator inside flashing means connected to the network.
3. **HDMI IN** - HDMI input port, connect to video source with HDMI cable.
4. **HDMI OUT** – HDMI output port, connect to TV or monitor to show video, not necessary only if you need.
5. **LINE OUT** – 3.5mm 3-pole TRS audio port, connect to earphone or speaker by audio cable. Does not work when device connects to smartphone.
6. **MIC IN** – 3.5mm 3-pole TRS audio port, connect to microphone to mix sound.
7. **USB HOST** – Connect to USB flash drive for saving recording video file, support FAT32 and exFAT formats, NTFS is not supported. Or connect to smartphone to project video to big screen and capture and streaming video.
8. **RESET** – Reset button, use a needle or stick to press it to reset device.
9. **STREAM** – Stream button for streaming video through LAN port, press it to start streaming, press again to stop. Indicators: WHITE – ready to streaming, RED flashing – not ready, GREEN – start streaming.
10. **REC** – Record button for recording video into USB flash drive, press it to start recording, press again to stop. Indicators: WHITE – ready to streaming, RED flashing – not ready, GREEN – start streaming.

# Start Work

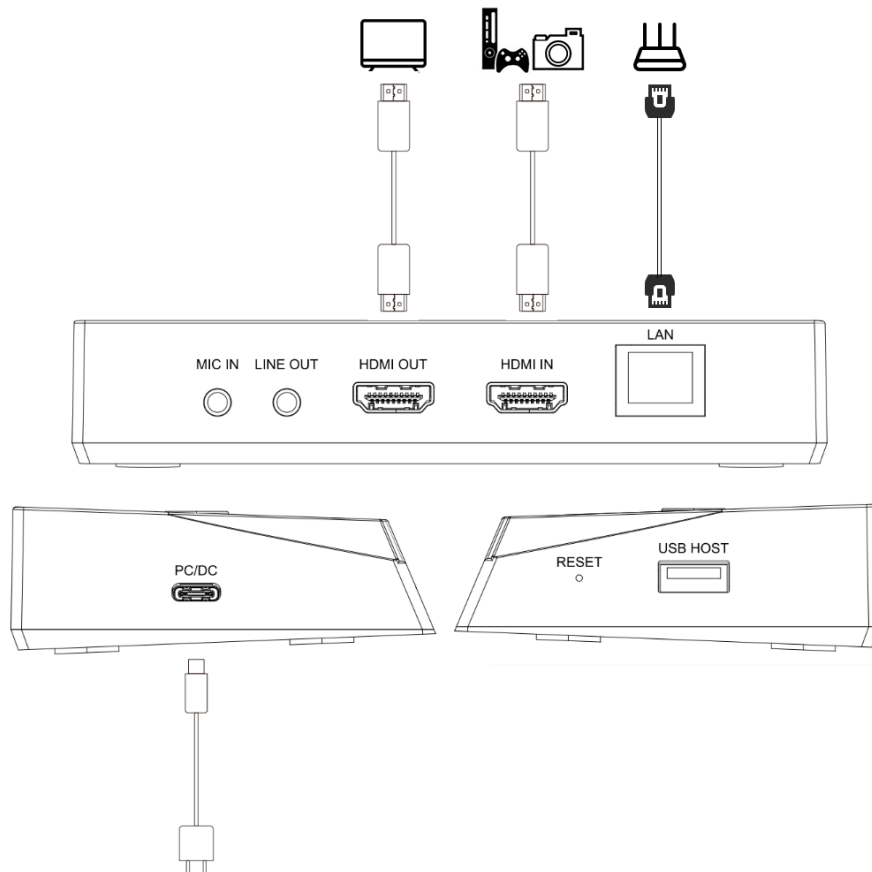
## Record video to USB flash drive or USB HDD



1. Plug USB Type-C connector of included USB cable to **PC/DC** port, and USB Type-A connector to your USB DC adapter (5V2A, not included) to power on device. REC button will flash in **RED**, it means device is not ready.
2. Use a HDMI cable to connect **HDMI IN** port and HDMI video source.
3. Use a HDMI cable to connect **HDMI OUT** port and TV or monitor. You should get video and audio on TV right now.
4. Plug an USB flash drive or USB HDD (exFAT or FAT32 format with enough space) to **USB HOST** port of device. NTFS format is not supported. And please make sure the power supply is sufficient when you use USB HDD. REC button will be illuminated **WHITE** now, and it means device is ready to record.

5. Press **REC** button to start recording, REC button will be illuminated **GREEN**, it means device is recording. Press **REC** button again to stop recording, and save the recorded file into USB flash drive. **GREEN** REC button will be extinguished, and **WHITE** indicator is illuminated. Please plug-out USB flash drive until WHITE indicator is illuminated, which may take a few seconds.
6. Please refer to the step 5 of the next **Stream live video on YouTube with network bonding (RTMP)** guide to set recording bitrate and FPS. The default settings are 16Mbps and 60pfs. The recording resolution depends on the HDMI input resolution.
7. Use FAT32 format USB flash disk to record video, the max single file is about 4GB. During recording, when the file reaches 4GB, device will automatically save a file and create another file.
8. While the REC indicator is flashing in RED, it means the setup or configurations are incorrect:  
No HDMI signal input. No USB storage inserted in USB HOST port. Incorrect system format for USB storage. The capacity of USB storage is full.

## **Stream live video on YouTube with network bonding (RTMP)**



1. Plug USB Type-C connector of included USB cable to **PC/DC** port, and USB Type-A connector to your USB DC adapter (5V2A, not included) to power on device. **STREAM** button will flash in **RED**, it means device is not ready to stream.
2. Use a HDMI cable to connect **HDMI IN** port and HDMI video source.
3. Use a HDMI cable to connect **HDMI OUT** port and TV or monitor. You should get video and audio on TV right now.
4. Use a network cable to connect your network and **LAN** port of device, and **GREEN** LAN port indicator will be illuminated, means connected well, and **ORANGE** indicator flashes, means network is ready.
5. Please make sure that the device is in the same LAN as the computer where you set RTMP.

Please go to [www.ezcap.com/uploads/download/hdpvrpro.zip](http://www.ezcap.com/uploads/download/hdpvrpro.zip) , download and get **HD PVR**

**Pro-win and HD PVR Pro-mac folders**, please select according to your computer system.

Open the folder and double click **HD PVR Pro.exe** and appears you a window. It will start to

scan the device until appears you **HD PVR Pro** with MAC address, please click the **HD PVR Pro** and will open a web page as below picture.

The screenshot displays a web interface with two main sections: **Format settings** and **Streaming settings**. The **Format settings** section on the left includes fields for Resolution (1920x1080), Bitrate (4000000), FPS (60), and GOP (30), with a **Save** button at the bottom. The **Streaming settings** section on the right includes fields for RTSP URL (rtsp://192.168.0.32/live), RTMP(S) (rtmp://sendtc3a.douyu.com/live), and a Stream key (6494996r2rz6oIJl?wsSecret=191), with a **Copy URL** button and a **Save** button.

The **Format settings** list on the left includes settings of **Resolution**, **Bitrate**, **FPS** and **GOP**, they are for both of RTMP/RTSP and recording video in USB flash drive when you use the both functions at the same time. Please click **Save** to finish the setting.

**Resolution:** 1920 x 1080, 1280 x 720, 640 x 480. Only for RTMP streaming video.

**Bitrate:** Less than or equal to 16000000bps. For both of record in USB flash drive and RTMP.

**FPS:** Less than or equal to 60pfs. For both of record in USB flash drive and RTMP.

The **Streaming settings** list on the right includes **RTSP URL**, **RTMP - Stream URL** and **Stream key**. Please fill in the **Stream URL** and **Stream key** according to your streaming platform and account, such as YouTube, Facebook, and click **Save** to finish the settings.

**STREAM** button will be illuminated **WHITE** now, and it means device is ready to stream.

6. Press **STREAM** button to start streaming, **STREAM** button will be illuminated **GREEN**, it means device is streaming. Press **STREAM** button again to stop streaming, **GREEN** **STREAM** button will be extinguished, and **WHITE** indicator is illuminated.

7. While the STREAM indicator is flashing in RED, it means the setup or configurations are incorrect: No HDMI signal input. No network connected or no network. RTMP URL and key are not set.

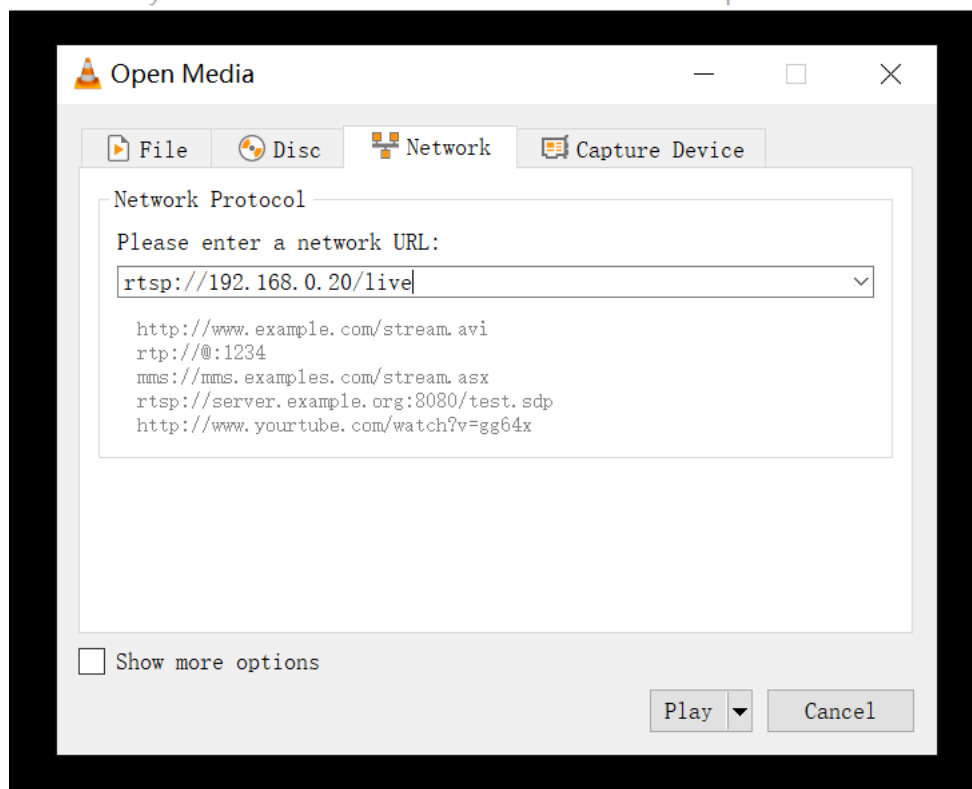
## RTSP

1. After you finished steps 1 to 5 in above **Stream live video with network bonding (RTMP)** instruction, you should get the **RTSP URL** such as **rtsp://192.168.x.xx/live**.
2. Please use a computer on the same local area network to go to <https://www.videolan.org>, download **VLC media player** and install it.
3. Open VLC media player, and click **Media** and select **Open Network Stream**, and fill in the **RTSP URL** as picture, then click **Play** to view the video from ezcap HD PVR Pro.

**RTSP URL** will automatically display on the web settings page, it comes from the network the device is connected to.

 VLC media player

Media Playback Audio Video Subtitle Tools View Help



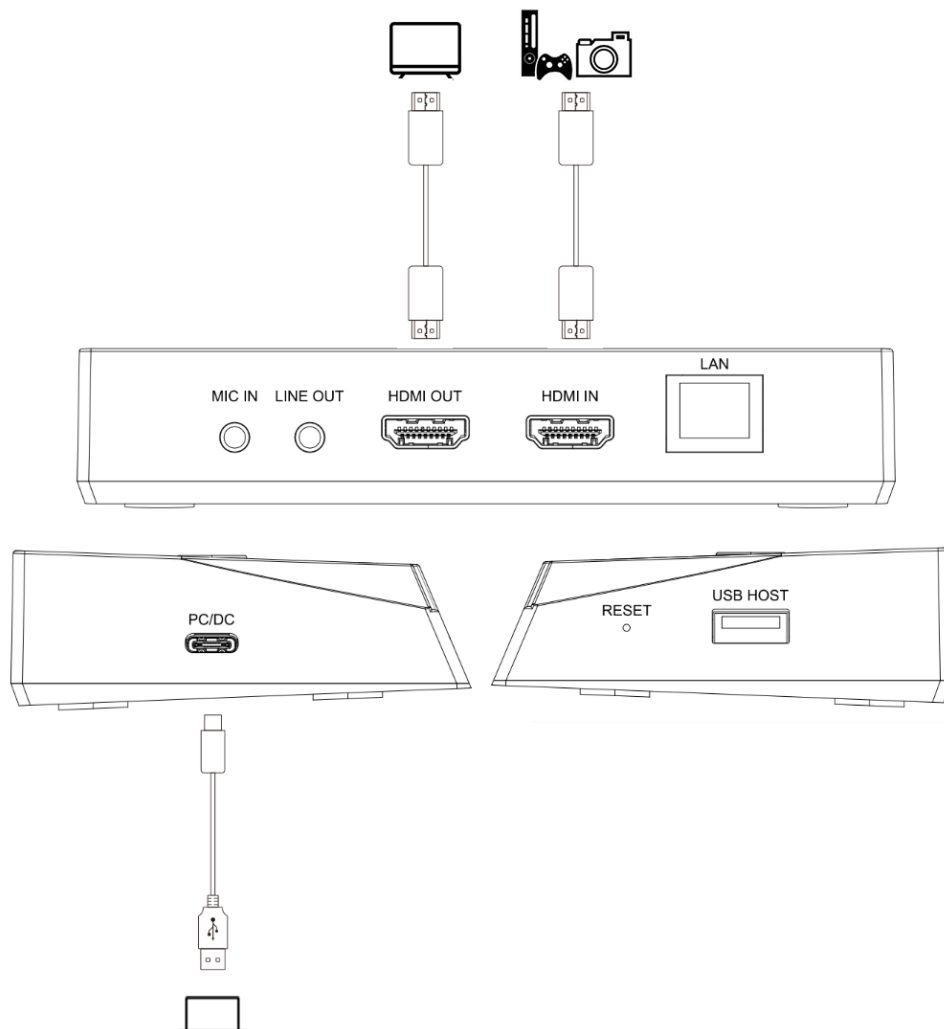


4. You can also install the VLC app on your smartphone, and get the video through RTSP settings.

Of course, you need to set your smartphone to the same local network as ezcap350 HD PVR Pro device.

**Note:** You can record HDMI video in USB flash drive and stream video through RTMP/RTSP at the same time. Please do not set the high bitrate when you stream video.

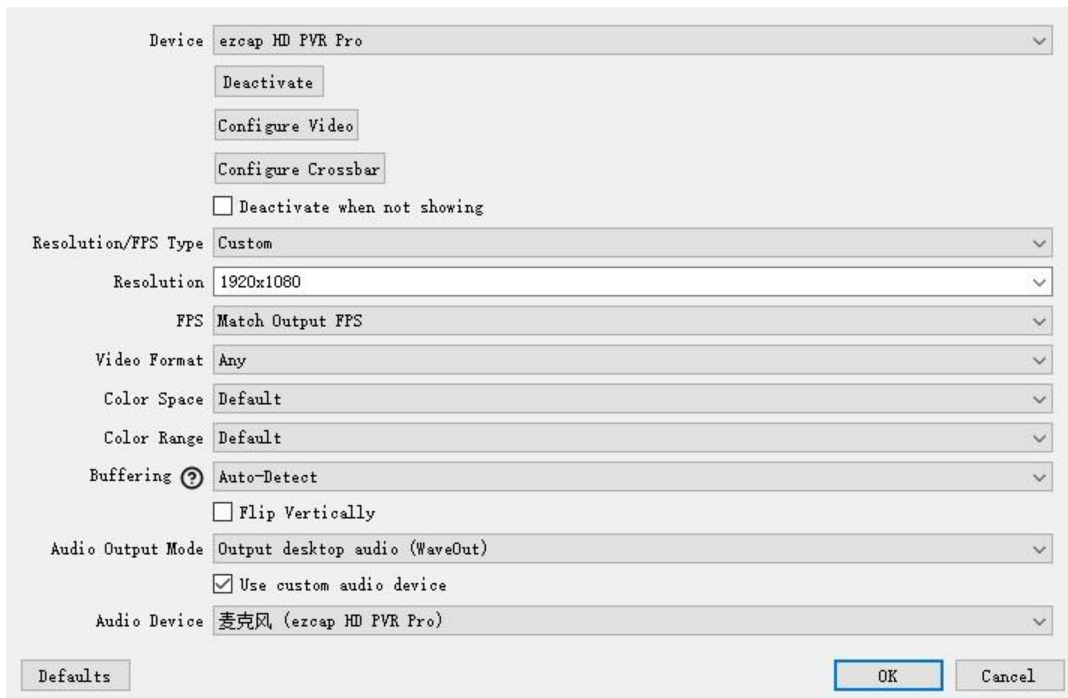
## Capture and stream HDMI video by software on computer



1. Plug USB Type-C connector of included USB cable to **PC/DC** port, and USB Type-A connector to computer USB 3.0 port. Please use the included USB adapter with cable together if computer is USB 3.0 Type-C port.
2. Use a HDMI cable to connect **HDMI IN** port and HDMI video source.

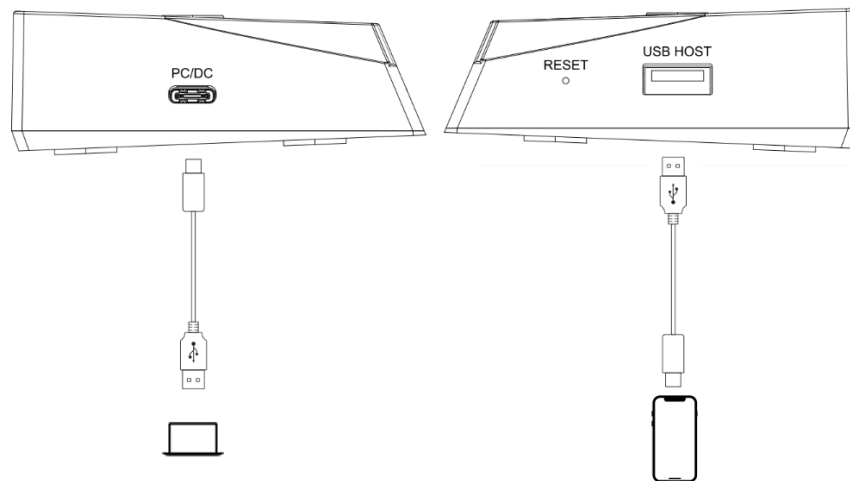
3. Use a HDMI cable to connect **HDMI OUT** port and TV or monitor according your need. You should get video and audio on TV right now.
4. Please go to <https://obsproject.com/> to download OBS and install on your computer.

Click on the + icon of OBS, and select **Video Capture Device**, and click **OK** of new window, then select **ezcap HD PRV Pro** in **Device** list. Please select **Output desktop audio (WaveOut)** in the **Audio Output Mode** list. Tick **Use custom audio device**, and select **ezcap HD PRV Pro** in the **Audio Device** list. You will see the video from ezcap HD PVR Pro appear in the preview window.



5. We do not suggest recording video in USB flash drive and capturing streaming video by software on computer at the same time. This may cause the video to freeze or even fail to achieve. But if you do that, please setup **Video Format** to **H264** on software.
6. You can click the **Help** icon to learn more how to record and stream video on OBS.

## Capture and stream smartphone video by software on computer



1. Plug USB Type-C connector of included USB cable to **PC/DC** port, and USB Type-A connector to computer USB 3.0 port. Please use the included USB adapter with cable together if computer is USB 3.0 Type-C port.
2. Use the original USB cable of your smartphone to connect your phone and **USB HOST** port of device. Please click **Trust** and fill in the **password** of your phone.

3. Please go to <https://obsproject.com/> to download OBS and install on your computer.

Click on the + icon of OBS, and select **Video Capture Device**, and click **OK** of new window, then select **ezcap HD PRV Pro** in **Device** list. Select **Resolution/FPS Type** to be **Custom**, then select Resolution and FPS you want, and must select **Video Format** to **H264**. Please select **Output desktop audio (WaveOut)** in the **Audio Output Mode** list. Tick **Use custom audio device**, and select **ezcap HD PRV Pro** in the **Audio Device** list. You will see the video from ezcap HD PVR Pro appear in the preview window.

4. You can click the **Help** icon to learn more how to record and stream video on OBS.
5. **The device only supports iPhone and iPad right now, and will support Android smartphone in the future.** Please **ONLY** select **H.264 video format** when you capture or stream smartphone video by software on computer. When you connect smartphone to device, please do not connect HDMI input of device, and device has no HDMI output and earphone

output, and cannot get RTMP and RTSP function through LAN port.

6. Some software involving private information does not support H.264 format, such as Facetime and etc.

**Note:** If device went to dead, use a needle (stick) press the **RESET** key on product side.

## Update firmware through Web Setting page (OTA)

You can update to the last firmware, just click **Upgrade** button on the Web Setting page and follow the prompts.

If there is no problem in use, please do not update the firmware. Please do not do anything during updating, such as power off device, connect any cables.

## Specifications

<b>Interface</b>	USB 3.0 Type-C, USB 2.0 Type-A
<b>Video Input</b>	HDMI 2.0, USB 2.0 Type-A
<b>Audio Input</b>	HDMI input, microphone input (3.5mm 3-pole TRS), USB 2.0 Type-A
<b>Video Output</b>	HDMI 2.0, USB 3.0 Type-C, RJ45 LAN
<b>Audio Output</b>	HDMI output, earphone output (3.5mm 3-pole TRS), USB 3.0 Type-C, RJ45 LAN
<b>User Interface</b>	Record button, Stream button, Reset button, Status indicators
<b>Resolution</b>	HDMI Input/Pass-through: 720 x 480 (60p), 720 x 576 (50p), 1280 x 720p(50p/60p), 1920 x 1080 (50p/60p), 3840 x 2160 (30p/50p/60p)
	Record: 720 x 480 (60p), 720 x 576 (50p), 1280 x 720p(60p), 1920 x 1080 (60p), (1080p50 for 4K60 RGB input)

	RTMP/RTSP/USB-C output: 640 x 480, 1280 x 720p, 1920 x 1080, max 1080p60
<b>Storage Media</b>	USB flash drive, USB HDD, Max 2TB, supports FAT32 and exFAT.
<b>Record Quality</b>	Max 16Mbps@1080P 60fps
<b>Record File</b>	H.264 mp4 format, max 4GB per file for FAT32 format storage.
<b>USB-C output format</b>	NV12, MJPG, H.264
<b>Power Supply</b>	USB Type-C DC 5V2A (not include power supply adapter)
<b>Dimensions</b>	140(L) x 80(W) x 27(H) mm
<b>Weight</b>	128g

## System Requirements

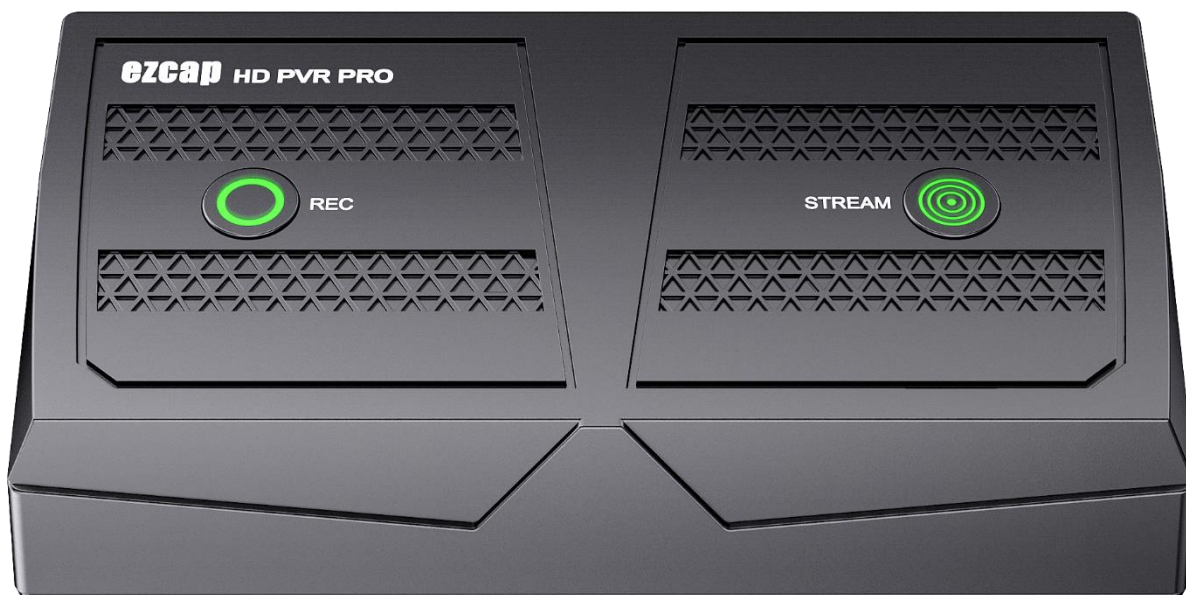
Windows 10/11 64bit, Mac OS X 10.14

**Desktop:** Intel Core i5-8xxx / AMD Ryzen 7, NVIDIA GeForce GTX 660 / AMD Radeon RX 870, 8GB RAM.

**Laptop:** Intel Core i7-7xxx / AMD Ryzen 7, NVIDIA GeForce GTX 1050ti, 8GB RAM.



**HD PVR Pro**  
**全高清录制直播盒**  
**说明书**



产品型号：ezcap350

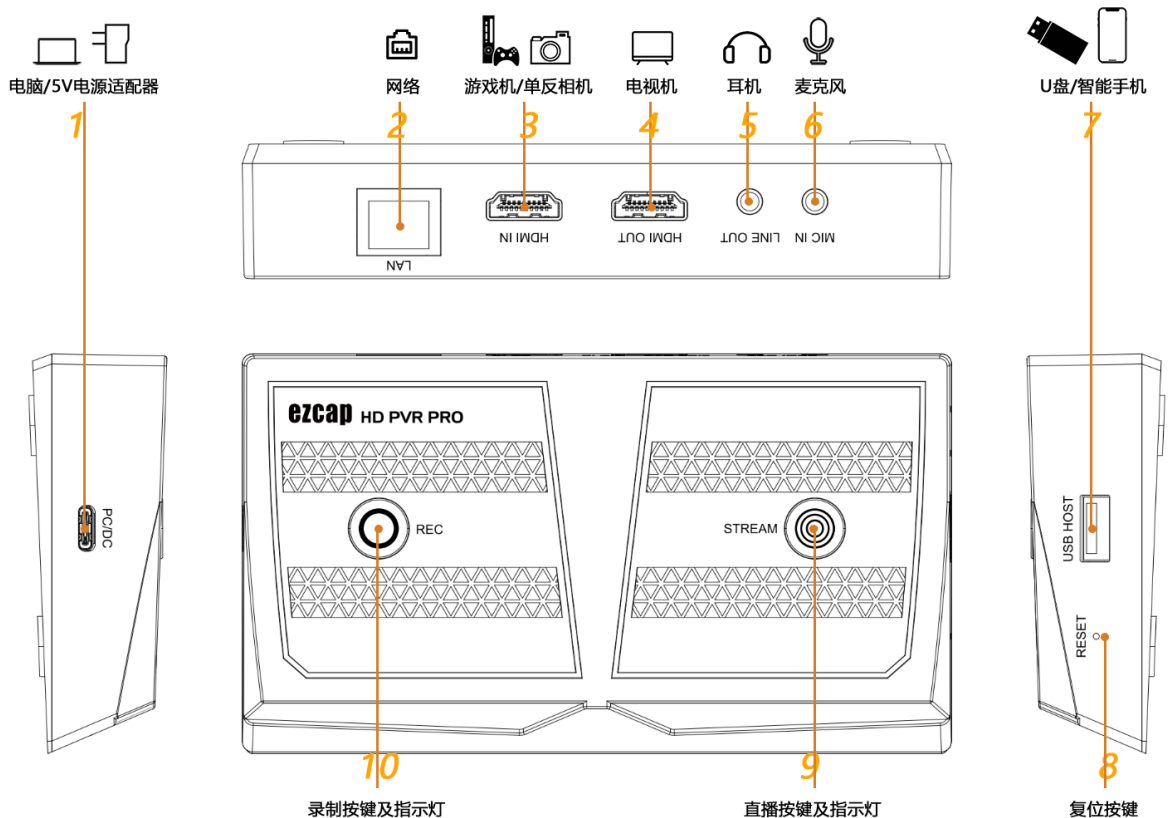
感谢您购买 **ezcap350 HD PVR Pro 全高清录制直播盒**。使用前请阅读本手册并将其保存在安全的地方以备日后参考。您可以使用此设备：输入输出 4Kp60 HDR HDMI，录制高达 1080p60 高清视频并存储于 U 盘内，连接电脑使用软件采集和直播 1080p60 视频，通过网络绑定直接视频直播，在电脑上采集和直播智能手机视频。

## 概述

### 包装

ezcap350 HD PVR Pro 全高清录制直播盒 x1，说明书 x1，USB 线 x1，USB 转接头 x1。

### 产品概览与连接



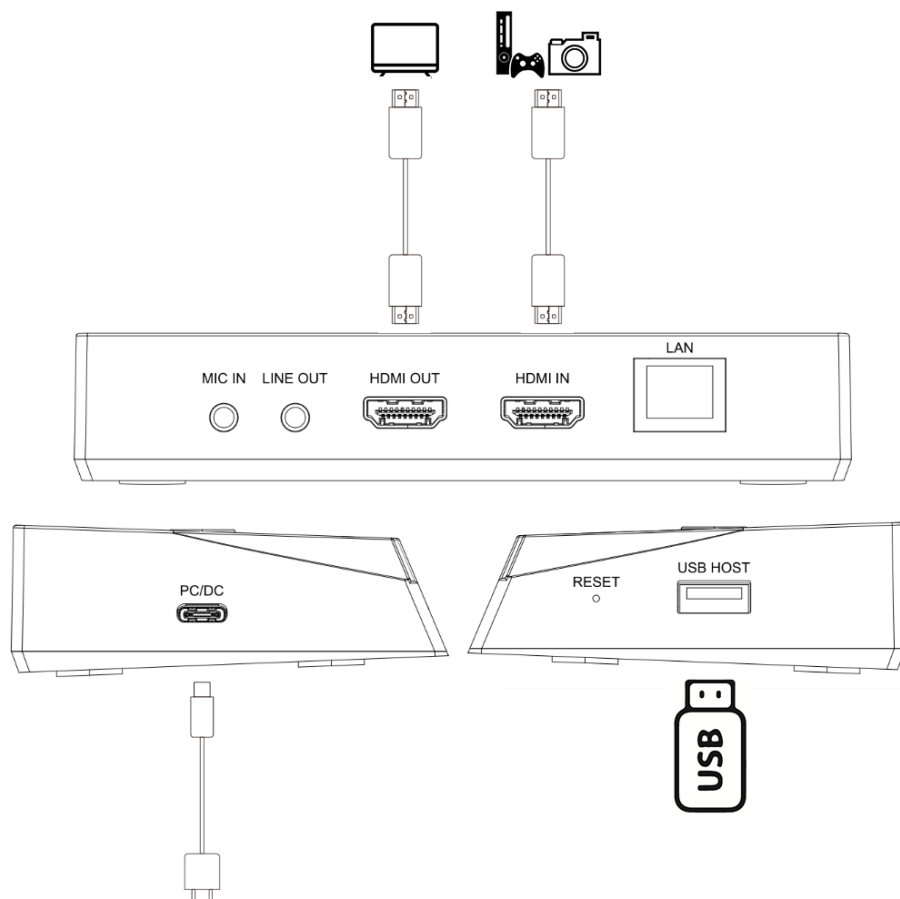
1. **PC/DC** – USB Type-C 接口，连接 5V2A USB 电源，或连接到计算机 USB3.0 接口以通过软件采集和直播视频。
2. **LAN** – 网络接口，连接到网络以直播视频。接口内的指示灯闪烁表示连接网络成功。
3. **HDMI IN** – HDMI 输入接口，用 HDMI 连接到视频源。
4. **HDMI OUT** – HDMI 输出接口，用 HDMI 线连接到电视机或显示器以显示视频，仅在您需要时连接。
5. **LINE OUT** – 线路输出接口，3.5mm 三节 TRS 标准，连接到耳机。设备连接智能手机时无效。
6. **MIC IN** – 麦克风输入接口，3.5mm 三节 TRS 标准，连接麦克风混音。
7. **USB HOST** – 连接 U 盘或 USB 移动硬盘以保存录制的视频文件，支持 FAT32 和 exFAT 格式，不支持 NTFS 格式。或连接到智能手机，用于手机投屏和采集直播手机视频。
8. **RESET** – 复位键，使用针插入并按下可以让设备复位。
9. **STREAM** – 直播按键，用于通过网络接口进行视频直播。按下开始直播，再次按下停止直播。直播按键指示灯：白色 – 准备直播，红色闪 – 没有准备好，绿色 – 直播中。
10. **REC** – 录制按键，用于录制视频保存于 U 盘中。按下开始录制，再次按下停止录制。录制按键指示灯：



白色 – 准备录制，红色闪 – 没有准备好，绿色 – 录制中。

## 开始工作

### 将 HDMI 视频录制到 U 盘或 USB 移动硬盘

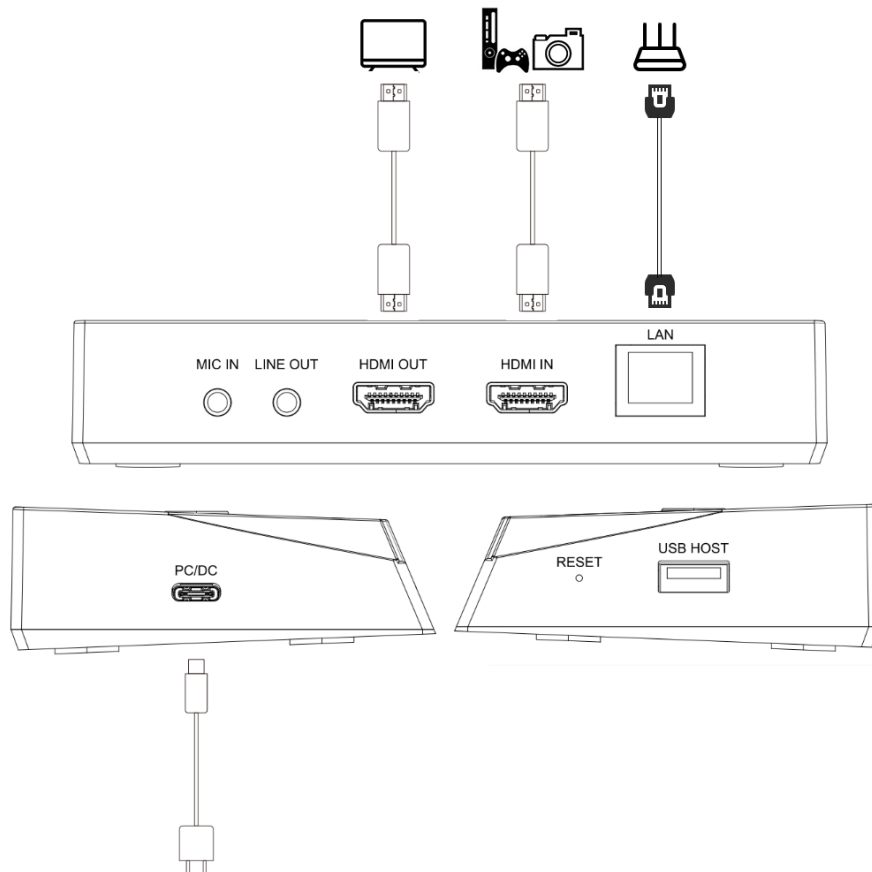


1. 将随附的 USB 线的 USB Type-C 接头连接到设备的 **PC/DC** 接口，再将线的 USB-A 接头连接到 USB 电源适配器（5V2A，未包括在包装内，可使用手机充电器）。**REC** 录制按键会**红灯**闪烁，表示设备还没有准备好。
2. 用一条 HDMI 线连接设备的 **HDMI IN** 接口和需要录制的视频源设备的 HDMI 输出接口。
3. 用一条 HDMI 线连接设备的 **HDMI OUT** 接口和电视机或显示器，你这时应该可以在电视机上浏览音视频。
4. 插入一个有足够空间的 U 盘或 USB 移动硬盘（exFAT 或 FAT32 格式，不支持 NTFS 格式）到设备的

**USB HOST** 接口，如果使用 USB 移动硬盘请确保供电充足。 **REC** 录制按键会亮起**白灯**，表示设备已经准备好录制。

5. 按下 **REC** 录制按键开始录制， 录制按键指示灯会亮起**绿色**，表示设备录制中。再次按下 **REC** 录制按键停止录制，保存文件到 U 盘，按键指示灯绿色熄灭，**白色**亮起。 请确保等到白色的指示灯亮起再拔出 U 盘，这可能需要几秒钟时间。
6. 录制视频文件的比特率和帧率可以通过网页设置，具体详见下面**通过网络接口用网络绑定直播视频 (RTMP)** 说明的第五步骤。默认录制比特率为 16Mbps，帧率为 60fps。录制分辨率取决于 HDMI 输入分辨率。
7. 使用 FAT32 格式的 U 盘录制视频，单个文件最大 4GB 左右。录制过程中，当文件达到 4GB 时，设备会自动保存一个文件，并创建另一个文件。
8. 如果 REC 录制指示灯闪红色，表示一些设置或配置不正确：没有连接 HDMI 输入。没有连接 USB 存储器到 USB HOST 接口。USB 存储器格式不正确。USB 存储器容量已满。

## **通过网络接口用网络绑定直播视频 (RTMP)**



1. 将随附的 USB 线的 USB Type-C 接头连接到设备的 **PC/DC** 接口, 再将线的 USB-A 接头连接到 USB 电源适配器 (5V2A, 未包括在包装内, 可使用手机充电器)。 **STREAM** 直播按键会**红灯**闪烁, 表示设备还没有准备好。
2. 用一条 HDMI 线连接设备的 **HDMI IN** 接口和需要录制的视频源设备的 HDMI 输出接口。
3. 用一条 HDMI 线连接设备的 **HDMI OUT** 接口和电视机或显示器, 你这时应该可以在电视机上浏览音视频。
4. 用一条网线连接到网络设备的网口和设备的 **LAN** 网络接口。网络接口的**绿色**指示灯亮起, 表示网线连接正常, 网络接口的**橙色**指示灯闪烁, 表示连接网络正常。
5. 设置前, 请确保用于设置的电脑与设备处于同一个局域网内。

请登录网址 [www.ezcap.com.cn/uploads/download/hdpvrpro.zip](http://www.ezcap.com.cn/uploads/download/hdpvrpro.zip), 下载并解压缩后得到 **HD PVR Pro-win 文**和 **HD PVR Pro-mac 文件夹**, 请根据计算机系统选择。打开文件夹双击 **HD PVR Pro.exe** 后会弹出窗口, 并开始搜索设备。直到出现带有 MAC 地址的 HD PVR Pro 出现, 点击 **HD PVR Pro** 后打开一个网页, 如下图。

The image shows a settings interface with two main sections: 'Format settings' and 'Streaming settings'.  
**Format settings:** Includes fields for '分辨率' (Resolution) set to '1920x1080', 'Bitrate' set to '4000000', 'FPS' set to '60', and 'GOP' set to '30'. A 'Save' button is at the bottom.  
**Streaming settings:** Includes 'RTSP URL' set to 'rtsp://192.168.0.58/live' with a 'Copy URL' button, 'RTMP(S)' set to 'rtmp://sendtc3a.douyu.com/live', and a 'Stream key' field containing '6494996r2rz6olJl?wsSecret=191...'. A 'Save' button is to the right of the Stream key field.

左侧的 **Format settings** 格式设置包括分辨率, 比特率 (Bitrate) 和帧率 (FPS), 当你同时 RTMP/RTSP 直播和录制视频保存于 U 盘, 这些设置会同时适用于它们。请点击 **Save** 以保存设置。

**分辨率:** 1920 x 1080, 1280 x 720, 640 x 480, 仅用于 RTMP 视频直播。

**Bitrate 比特率:** 小于等于 16000000bps, 同时用于 U 盘录制和 RTMP 视频直播。

**帧率 FPS:** 小于等于 60pfs, 同时用于 U 盘录制和 RTMP 视频直播。

右侧的 **Streaming settings** 直播设置包括 **RTSP URL-RTSP 网址**和 **RTMP 的 Stream URL 和 Stream key**。请根据你直播视频的平台和账号填写 **Stream URL (直播网址)** 和 **Stream key (直播码)**, 比如抖音等, 并点击 **Save** 完成设置。**STREAM** 直播按键会亮起**白灯**, 表示设备已经准备好 RTMP 直播了。

- 按下 **STREAM** 直播按键开始直播, 直播按键指示灯会亮起**绿色**, 表示设备直播中。再次按下 **STREAM** 直播按键停止直播, 直播按键指示灯绿色熄灭, **白色**亮起。
- 如果 **STREAM** 直播指示灯闪红色, 表示一些设置或配置不正确: 没有连接 HDMI 输入。没有连接网线或没有网络。没有设置 RTMP 网址和直播码。

## RTSP

- 先按照上面**通过网络接口用网络绑定直播视频 (RTMP)** 说明中完成步骤 1-5 部分, 你会得到 **RTSP URL**

(RTSP 网址) 信息, 比如 **rtsp://192.168.x.xx/live**。

2. 请用同一局域网内的任一电脑登录网址 <https://www.videolan.org>, 下载 **VLC media player** 并安装。
3. 打开 VLC media player, 点击**媒体**后选择**打开媒体串流**, 在弹出的窗口内如上图填入看到的 **RTSP URL** 网址, 然后点击播放, 即可在此电脑上观看从 ezcab HD PVR Pro 传输来的音视频。

RTSP 网址会自动在网页设置面板显示, 它来自于设备所连接的网络。

 VLC media player

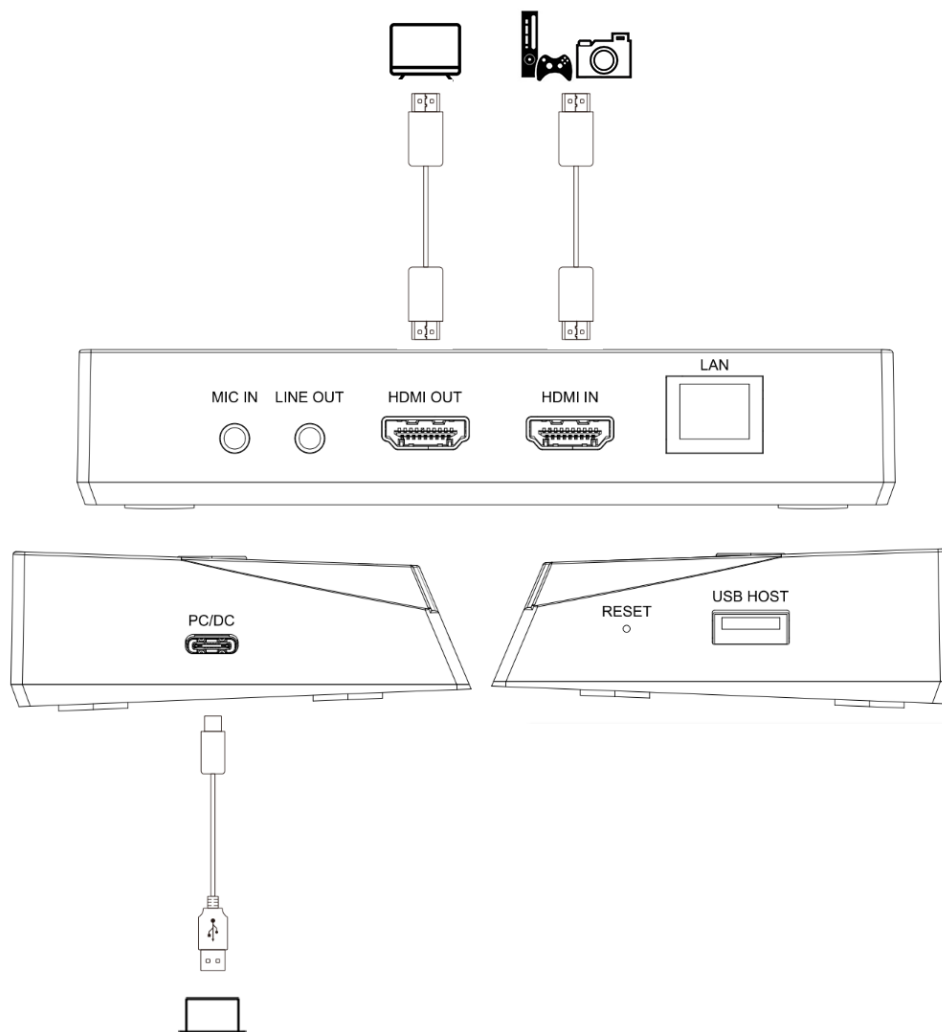
媒体(M) 播放(L) 音频(A) 视频(V) 字幕(T) 工具(S) 视图(I) 帮助(H)



4. 你还可以在智能手机上安装 VLC 来实现 RTSP 浏览视频功能。当然你需要将手机设置到和 ezcab350 HD PVR Pro 全高清录制直播盒同一个局域网下。

**注:** 您可以在录制 HDMI 视频到 U 盘的同时通过 RTMP/RTSP 直播 HDMI 视频。建议在直播视频时不要设置太高的比特率。

## 在电脑上使用软件采集和直播 HDMI 视频



1. 将随附的 USB 线的 USB Type-C 接头连接到设备的 PC/DC 接口，再将线的 USB-A 接头连接到电脑的 USB3.0 接口。如果电脑是 USB Type-C 接口，请使用随附的 USB 转接头连接 USB 线的 USB-A 接头和电脑的 USB Type-C 接口。
2. 用一条 HDMI 线连接设备的 **HDMI IN** 接口和需要录制的视频源设备的 HDMI 输出接口。
3. 用一条 HDMI 线连接设备的 **HDMI OUT** 接口和电视机或显示器，你这时应该可以在电视机上浏览音视频。
4. 请登录网址 <https://obsproject.com/> 根据自己的电脑系统下载并安装 OBS 软件。

点击 OBS 面板的+标志后选择**视频采集设备**，然后在新窗口下点击**确定**。在**设备**列表里选择 ezcap HD PVR Pro。在**音频输出模式**列表下选择**输出桌面音频 (WaveOut)**，勾选**使用自定义的音频设备**，并在**音频设备**列表里选择 ezcap HD PVR Pro。完成以上设置后，你将会在预览窗口看到来自 ezcap HD PVR Pro 全高清视频录制直播盒的视频了。

设备 ezcap HD PVR Pro

取消激活

配置视频

配置Crossbar

☐ 当不显示时禁用

分辨率/帧率 类型 自定义

分辨率 1920x1080

FPS 匹配输出帧率

视频格式 任意

色彩空间 默认

色彩范围 默认

正在缓冲 ? 自动检测

☐ 垂直翻转

音频输出模式 输出桌面音频(WaveOut)

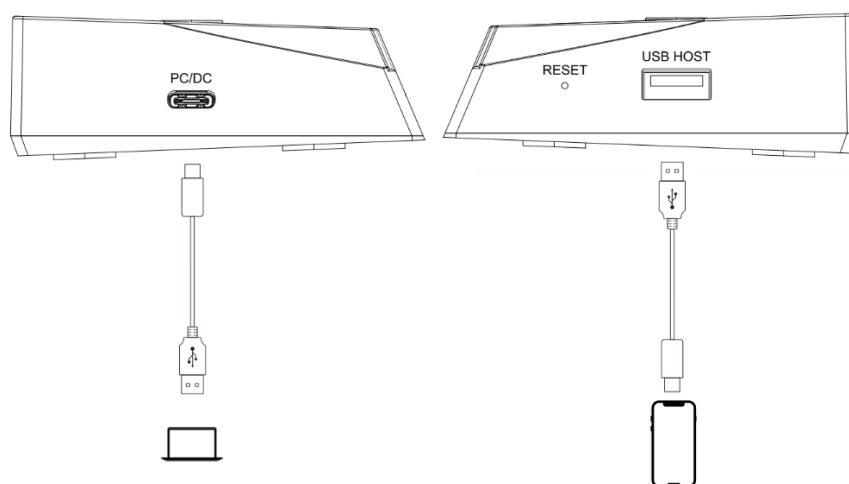
☒ 使用自定义的音频设备

音频设备 麦克风 (ezcap HD PVR Pro)

默认 确定 取消

5. 我们不建议同时使用录制 HDMI 视频到 U 盘和在电脑上用软件采集直播 HDMI 视频这两项功能，因为这可能会引起视频卡顿甚至某项功能失败，但是你如果同时使用这两项功能，请在软件设置视频格式为 H264。
6. 请点击 OBS 面板上的**帮助**按钮学习如何录制和直播视频和其它。

## 在电脑上使用软件采集和直播智能手机视频



1. 将随附的 USB 线的 USB Type-C 接头连接到设备的 PC/DC 接口，再将线的 USB-A 接头连接到电脑的

USB3.0 接口。如果电脑是 USB Type-C 接口，请使用随附的 USB 转接头连接 USB 线的 USB-A 接头和电脑的 USB Type-C 接口。

2. 请使用您智能手机的原装 USB 数据线连接智能手机和设备的 **USB HOST** 接口，并根据手机提示点击**信任并输入手机密码**。
3. 请登录网址 <https://obsproject.com/> 根据自己的电脑系统下载并安装 OBS 软件。

点击 OBS 面板的+标志后选择**视频采集设备**，然后在新窗口下点击**确定**。在**设备**列表里选择 **ezcap HD PVR Pro**，在**分辨率/帧率 类型**列表里选择**自定义**，然后选择你想要的**分辨率和帧率**，但在**视频格式**列表里必须选择 **H264**。在**音频输出模式**列表下选择**输出桌面音频 (WaveOut)**，勾选**使用自定义的音频设备**，并在**音频设备**列表里选择 **ezcap HD PVR Pro**。完成以上设置后，你会在预览窗口看到来自 **ezcap HD PVR Pro 全高清视频录制直播盒**的视频。

4. 请点击 OBS 面板上的帮助按钮学习如何录制和直播视频和其它。
5. **目前设备仅支持 iPhone 和 iPad，并会在未来支持安卓智能手机和平板。**连接手机并通过 OBS 等软件在电脑采集直播手机视频时，务必选择 **H264 视频格式**，**只有选择 H264 视频格式**才可以采集直播手机视频。同时连接手机时，请不要连接设备的 HDMI 输入接口，且此时设备无 HDMI 输出和耳机输出，同时也无法使用网络接口实现 RTMP 和 RTSP 功能。
6. 部分涉及隐私信息的软件不支持 H.264 格式，比如 Facetime 等。

**注:** 如果设备运行中死机，请用针或针状物按下产品侧面 **RESET** 孔内的按键以让设备复位。

## 通过设置网页更新固件(OTA)

您可以很方便地更新到最新固件，只需要在设置页面点击**升级**按钮，并按照提示操作即可。

如果您在使用中没有产生问题，请不用更新固件，以免造成不必要的麻烦。在更新过程中，请不要做别的任何事情，比如关闭设备，连接线材等。



# 规格参数

接口	USB 3.0 Type-C, USB 2.0 Type-A
视频输入	HDMI 2.0, USB 2.0 Type-A
音频输入	HDMI 输入, 麦克风输入 (3.5mm 三节 TRS) , USB 2.0 Type-A
视频输出	HDMI 2.0, USB 3.0 Type-C, RJ45 网口
音频输出	HDMI 输出, 耳机输出 (3.5mm 三节 TRS) , USB 3.0 Type-C, RJ45 网口
用户界面	录制按键, 直播按键, 复位按键, 状态指示灯
分辨率	HDMI 输入/环出: 720 x 480 (60p), 720 x 576 (50p), 1280 x 720p(50p/60p), 1920 x 1080 (50p/60p), 3840 x 2160 (30p/50p/60p)
	录制: 720 x 480 (60p), 720 x 576 (50p), 1280 x 720p(60p), 1920 x 1080 (60p), (4K60 RGB 输入时为 1080p50)
	RTMP/RTSP/USB-C 输出: 640 x 480, 1280 x 720p, 1920 x 1080, 最高 1080p60
存储媒介	U 盘, USB 移动硬盘, 最大 2TB, 支持 FAT32 和 exFAT 格式。
录制质量	最大 16Mbps@1080P 60fps
录制文件	H.264 mp4 格式, FAT32 格式存储器单个文件最大 4GB。
USB-C 输出视频格式	NV12, MJPG, H.264
电源	USB Type-C, 直流 5V2A (包装不含电源适配器)
尺寸	140(长) x 80(宽) x 27(高) mm
重量	128 克

# 系统配置

Windows 10/11 64 位, Mac OS X 10.14

**台式电脑:** Intel Core i5-8xxx / AMD Ryzen 7, NVIDIA GeForce GTX 660 / AMD Radeon RX 870, 8GB  
RAM

**笔记本电脑:** Intel Core i7-7xxx / AMD Ryzen 7, NVIDIA GeForce GTX 1050ti, 8GB RAM