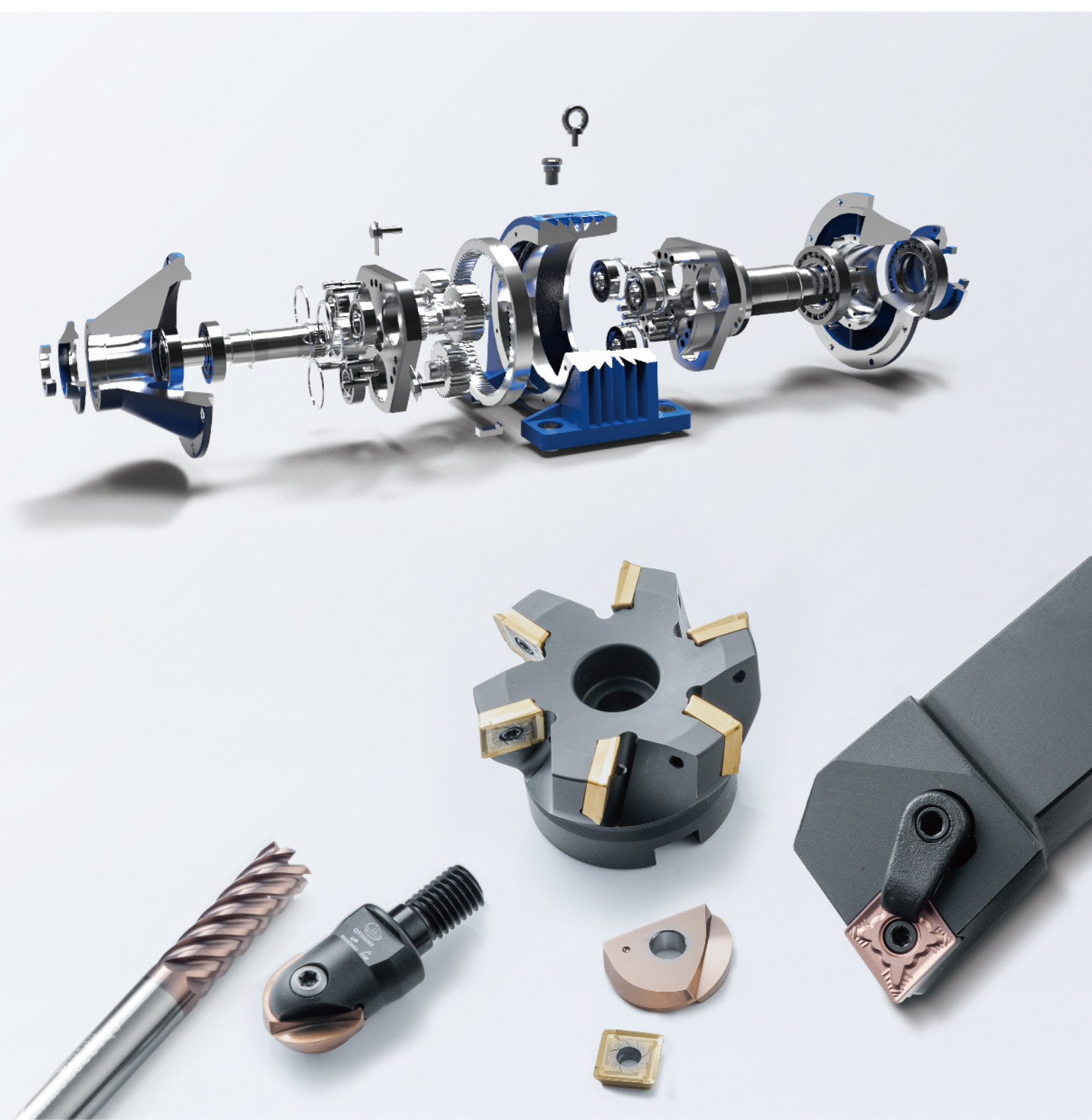


通用机械行业加工解决方案

Manufacturing Solutions for General Mechanical Industry



+ 华东大区
Eastern China Region

上海市青浦区华新镇华隆路1777号D栋610室
Add: Room 610 Building D No. 1777 Hualong Road
Huaxin Town Qingpu District Shanghai
Tel: +86-592-7301561

+ 华南大区
Southern China Region

广东省东莞市长安镇锦厦聚和机械模具五金城D1区49A号
Add: No. 49A D1 District Jinxia Juhe Machinery Mould
Hardware Commercial District Chang'an Town
Dongguan City Guangdong Province
Tel: +86-592-7310203

+ 西部大区
West Region

四川省成都市成华区建材路隆鑫九熙三期一栋2119
Add: Room 2119 Building 1 Longxin Jiuxi Phase III
Jiancai Road Chenghua District Chengdu City
Sichuan Province
Tel: +86-592-7306375

+ 华北大区
Northern China Region

天津市西青区碧祥路新津国际新兴园6-2-701
Add: 6-2-701 Xinjin International Xinxing Park Bixiang Road Xiqing
District Tianjin
Tel: +86-592-7301126

+ 东北大区
Northeast Region

辽宁省沈阳市铁西区建设东路158号 (华润铁西中心) 2109号
Add: No. 2109 (China Resources Tiexi Center) No. 158 Jianshe East
Road Tiexi District Shenyang City Liaoning Province
Tel: +86-592-7306375

+ 华中大区
Central China Region

湖北省武汉市经济技术开发区创业路12号嘉昱商务中心B座1304-1307号
Add: No. 1304-1307 Block B Jiayu Business Center No. 12 Chuangye
Road Wuhan Economic and Technological Development Zone Hubei
Province
Tel: +86-592-7310203

厦门金鹭特种合金有限公司
XIAMEN GOLDEN EGRET SPECIAL ALLOY CO.,LTD.

地址: 中国厦门市湖里区兴隆路69号
Add: No.69 Xinglong Road Huli District Xiamen CHINA
工厂地址: 中国厦门同安工业集中区集成路1601-1629号
Factory Add: No.1601-1629 Jicheng Road Industrial
Concentration Area Tongan Xiamen CHINA
Tel: +86-592-7107392 Fax: +86-592-7107322
PC: 361006 Email: gesac@cxctc.com

www.gesac.com.cn

 400-998-6858



BST202103e

厦门金鹭特种合金有限公司,成立于1989年,是一家中外合资的国家高新技术企业,隶属于中国六大稀土集团之一的厦门钨业股份有限公司。公司致力于高品质钨粉末材料、硬质合金、精密切削工具等钨系列产品的研发、生产,以及行业专业解决方案的提供,是世界知名的钨粉末、硬质合金及切削工具供应商。

凭借完整钨产业链的产品集成技术研发,以及务实、创新的管理理念,厦门金鹭始终保持着强劲的发展势头,为全球用户提供最高性价比的产品和服务,为现代工业领域解决高硬度、耐高温、耐磨损问题,提供了优良的产品和完善的解决方案,客户遍布全球四十多个工业发达国家和地区,享誉海内外。

公司拥有国内4个生产基地和1个国家级企业研发中心,海外3个销售公司和1个海外生产基地,独立承担并完成多项“国家科技支撑计划项目”,“国家科技重大专项”,“国家火炬计划项目”,“国家重点新产品”开发项目及省市重点研究课题,被评为“战略性新兴产业骨干企业”、“创新型企业”、“先进科技企业”。

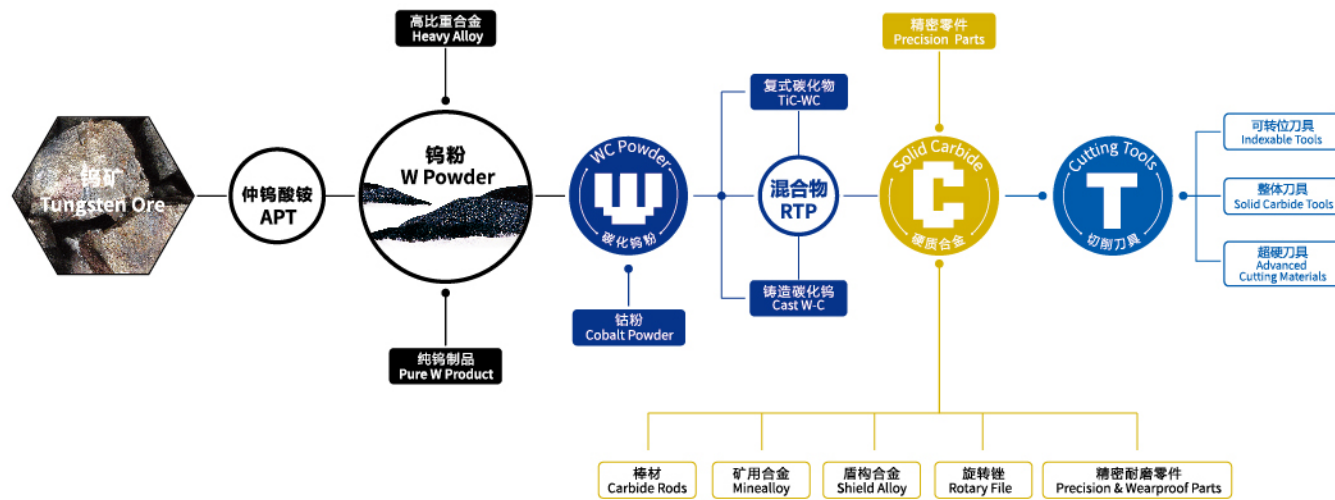
Xiamen Golden Egret Special Alloy Co., Ltd. (GESAC), founded in 1989, is a Sino-foreign joint venture with national high-tech, affiliated with XTC, which is one of six major rare earth groups in China. GESAC is committed to research & development, production and professional solutions providing of high-quality tungsten powder materials, cemented carbide, precision cutting tools and other tungsten products. Up to now, GESAC has become world-famous manufacturer and supplier of tungsten powder, cemented carbide and precision cutting tools products.

With the Integrated Product Development of complete tungsten industry chain, as well as a pragmatic and innovative management concept, GESAC has always maintained a strong momentum of development, providing the cost effective tungsten powder products and services for global users, offering the excellent products and perfect solutions for solving high hardness, high temperature resistance and wear resistance topics. Our brand "Golden Egret" has become one of the leading brand in the market, enjoying famous reputation in more than 40 countries and regions.

GESAC owns four production headquarters and one national level research center domestically, and three sales branches and one production base overseas. We undertook and completed several development programs independently, including the "National Science and Technology Support Programs", the "National Torch Program Projects", and the "National Key Projects" and so on. GESAC was awarded as "Key Enterprise for Strategic Emerging Industry", "Innovative Enterprise" and "Enterprise with Advanced Technology".

减速机行业加工解决方案
Manufacturing Solutions of Reducer Parts

箱体 Body	02
机盖 Cover	04
行星架 Plane Carrier	06
输出轴 Shaft	08
齿圈 Gear	10
行星轮 Planetary Gear	12
太阳轮 Sun Gear	14



**螺纹孔加工
Thread Hole Making**

• **D918S**

高性能硬质合金麻花钻
High Performance Solid Carbide Twist Drill

适用于钢、铸铁加工,重点解决断续切削和冷却条件差等恶劣工况。

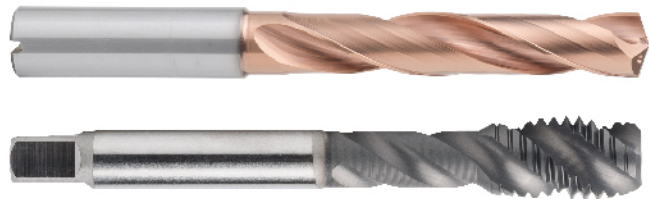
Suitable for processing steel, cast iron; aiming at solving processing problems in rough cutting conditions such as interrupted cutting or bad coolant condition.

• **T100系列丝锥**

T100 Tipper

螺旋槽高性能丝锥

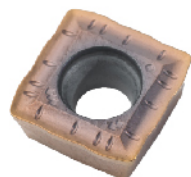
High Performance Twist Tipper



**底座安装孔加工
Base Mounting Hole Making**

• **QPMG+GHD-S**

高效双螺旋内冷浅孔钻
High Performance Double Helix Internal Coolant Twist Drill



**安装面铣削
Install Face Milling**

• **WNGU+MEE190**

双面曲线刃通用方肩铣削
Universal Shoulder Milling With Double Face Curvilinear Cutting Edge



**镗孔
Boring**

• **LRB系列**

LRB Series

大径粗镗刀

Large Diameter Rough Boring Cutter

• **LFB系列**

LFB Series

大径精镗刀

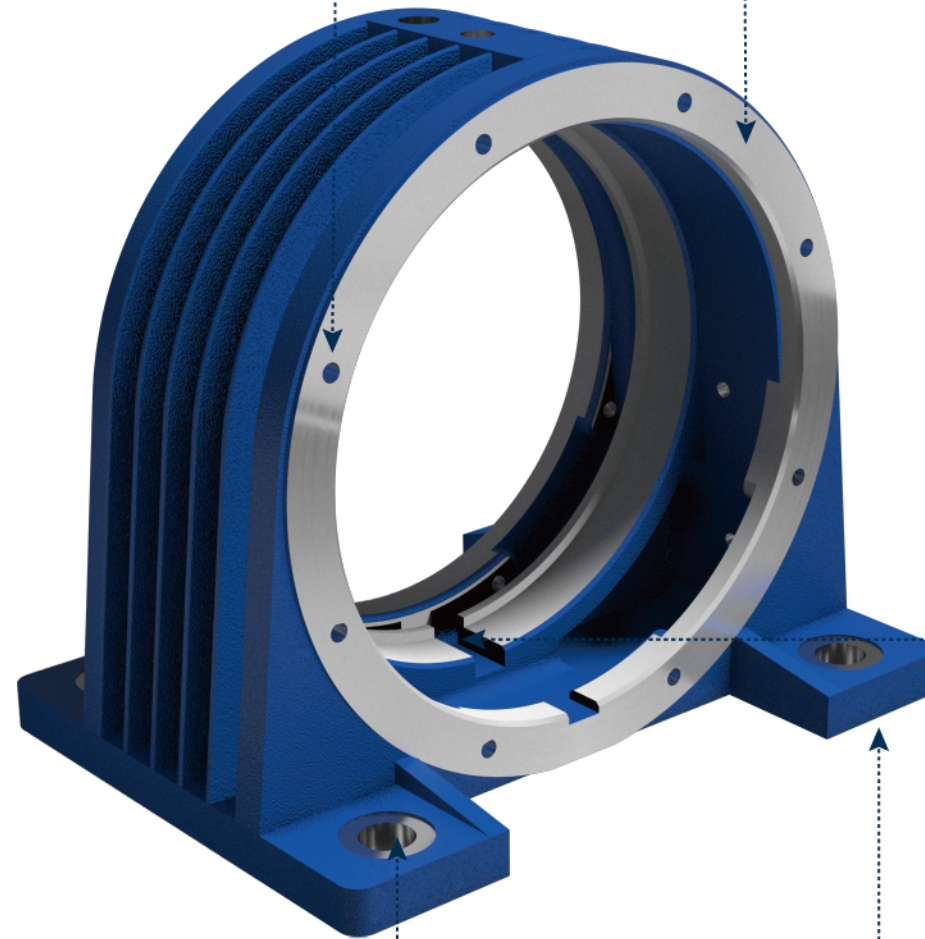
Large Diameter Fine Boring Cutter



**底部大平面铣削
Bottom Large Surface Milling**

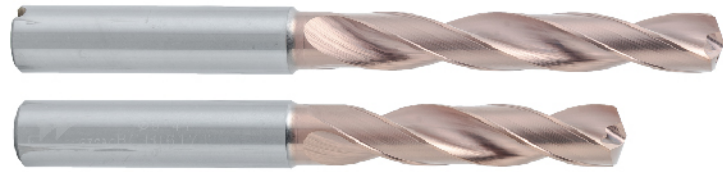
• **HNEX+MFB160**

经济型铸铁专用双面12刃面铣刀
Economical 12 Edges Double Faces Surface Milling for Cast Iron



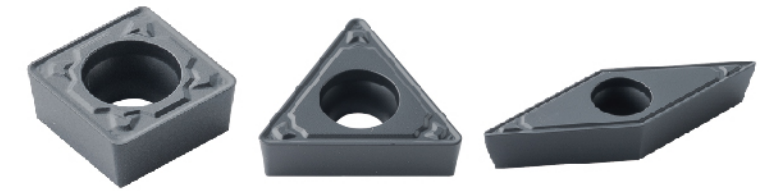
**孔加工
Hole Making**

- **D918S**
高性能硬质合金麻花钻
High Performance Solid Carbide Twist Drill



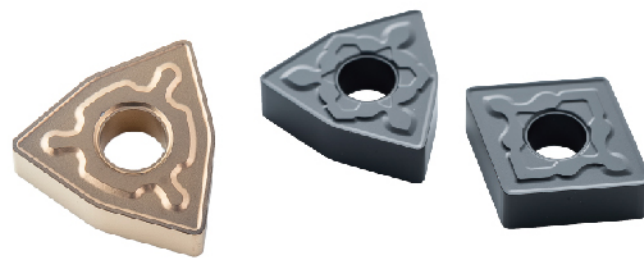
**内孔车削
Internal Turning**

- **正型KM槽型+GK1100系列**
Positive KM +GK1100 Grade Series
铸铁加工专用车削刀具
Turning Tool for Cast Iron



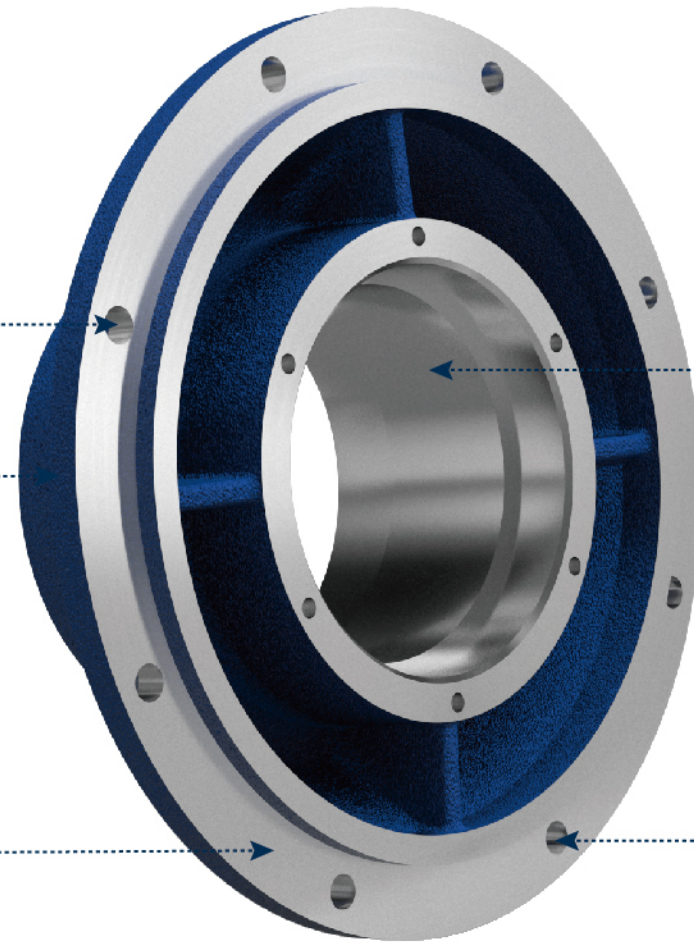
**外圆端面车削
External Surface Turning**

- **负型HK槽型+GK1200系列**
Negative HK Geometry+ GK1200 Grade Series
铸铁加工专用车削刀具
Turning Tool for Cast Iron
- **修光刀WMV槽型+GK1120牌号**
Wiper Edge WMV+GK1120 Grade
铸铁加工专用车削刀具
Turning Tool for Cast Iron



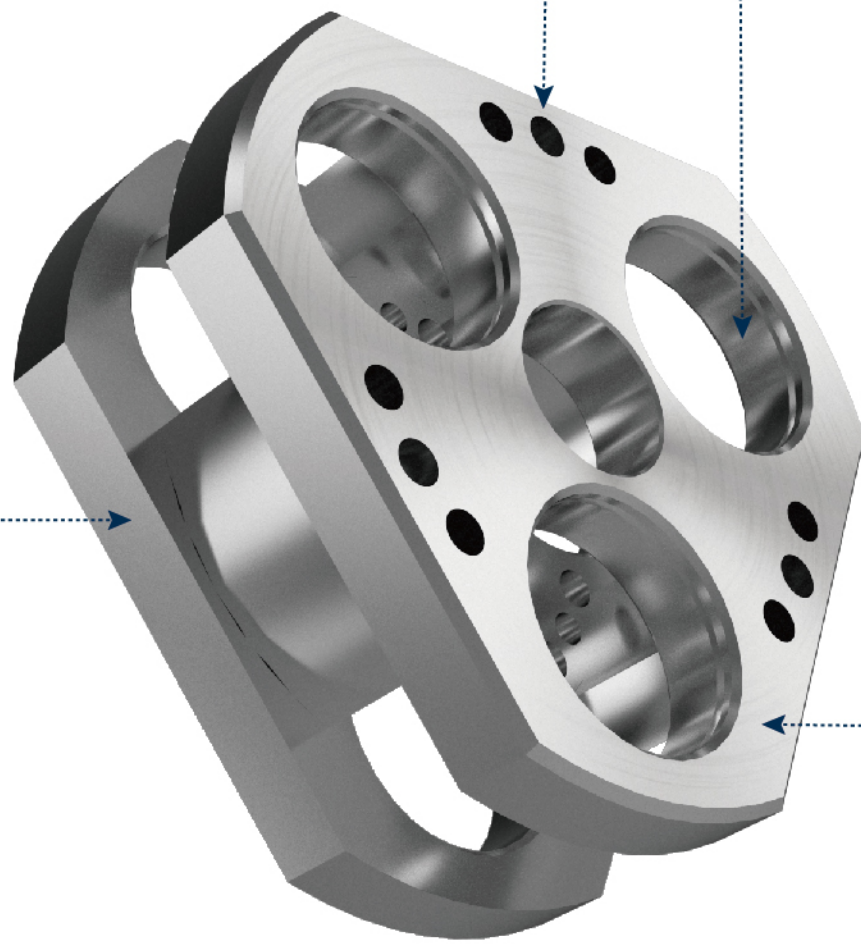
**螺纹孔加工
Thread Hole Making**

- **T100系列丝锥**
T100 Tipper
螺旋槽高性能丝锥
High Performance Twist Tipper



孔加工 Hole Making

- D938
普通钢加工硬质合金麻花钻
Solid Carbide Twist Drill for Steel



镗孔 Boring

- RB系列
RB Series
粗镗刀
Rough Boring Cutter
- FB系列
FB Series
精镗刀
Fine Boring Cutter



方肩铣削 Shoulder Milling

- APKT+MEB190
单面曲线刃方肩铣
Single Face Curve Shoulder Milling



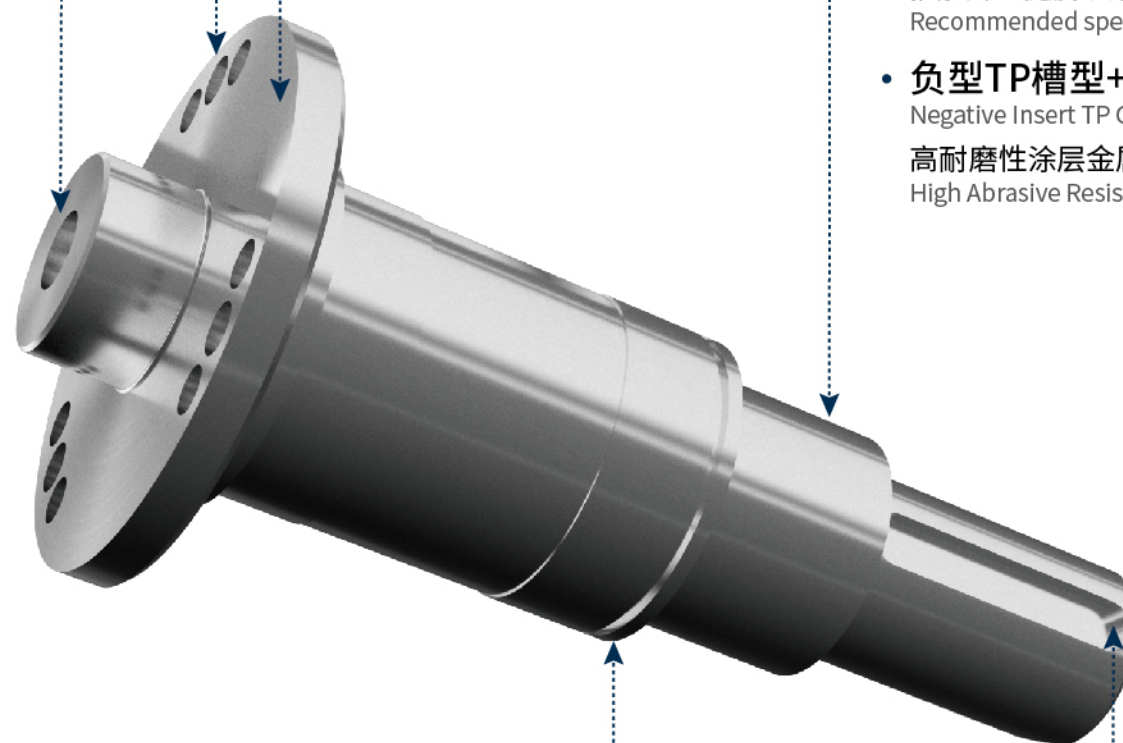
平面铣削 Face Milling

- SNEU+MFB145/245
高强度通用铣削
Heavy Duty Universal Milling



孔加工 Hole Making

- **D938**
普通钢加工硬质合金麻花钻
Solid Carbide Twist Drill for Steel
- **QPMG+GHD-S**
高效双螺旋内冷浅孔钻
High Efficiency Double Helix Internal
Coolant Shallow Hole Drill



外圆及端面车削 External Surface Turning

- **负型Q系列+GPT6100系列**
Negative Insert Q Series+GPT6100 Grade Series
GE.FORCE全新钢材高效车削刀具
Newly Developed GE.FORCE High Efficiency Turning Tools for Steel
推荐最优线速度: 大于300m/min
Recommended speed: >300m/min
- **负型TP槽型+GP31TM系列**
Negative Insert TP Geometry +GP31TM Grade Series
高耐磨性涂层金属陶瓷车削刀具
High Abrasive Resistance Coated Metallic Ceramic Turning Tool



油槽加工 Grooving

- **MT/FG/GB系列**
MT/FG/GB Series
高精确切槽切断系列刀具
High Accuracy Grooving and Parting Inserts



键槽加工 Keyway Milling

- **PP300**
普通钢高效加工立铣刀
High Efficiency Endmill for Steel
(D10铣刀加工碳钢, 最大金属去除率可达93.1cm³/min)
(Maximum metal removal rate can reach 93.1cm³/min for D10 endmill when processing carbon steel)



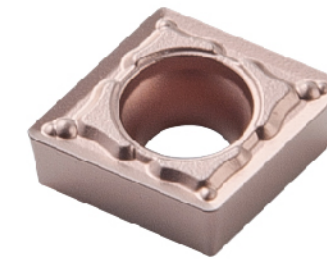


**外圆端面车削
External Surface**

- **负型Q系列+GPT6100系列**
Negative Q Insert Series+GPT6100 Grade Series
GE.FORCE全新钢材高效车削刀具
Newly Developed GE.FORCE High Efficiency Turning Tool for Steel

**内孔车削
Internal Turning**

- **正型MM系列+GPT6100系列**
Positive MM Type Insert+GPT6100 Grade Series
GE.FORCE全新钢材高效车削刀具
Newly Developed GE.FORCE High Efficiency Steel Turning Tool



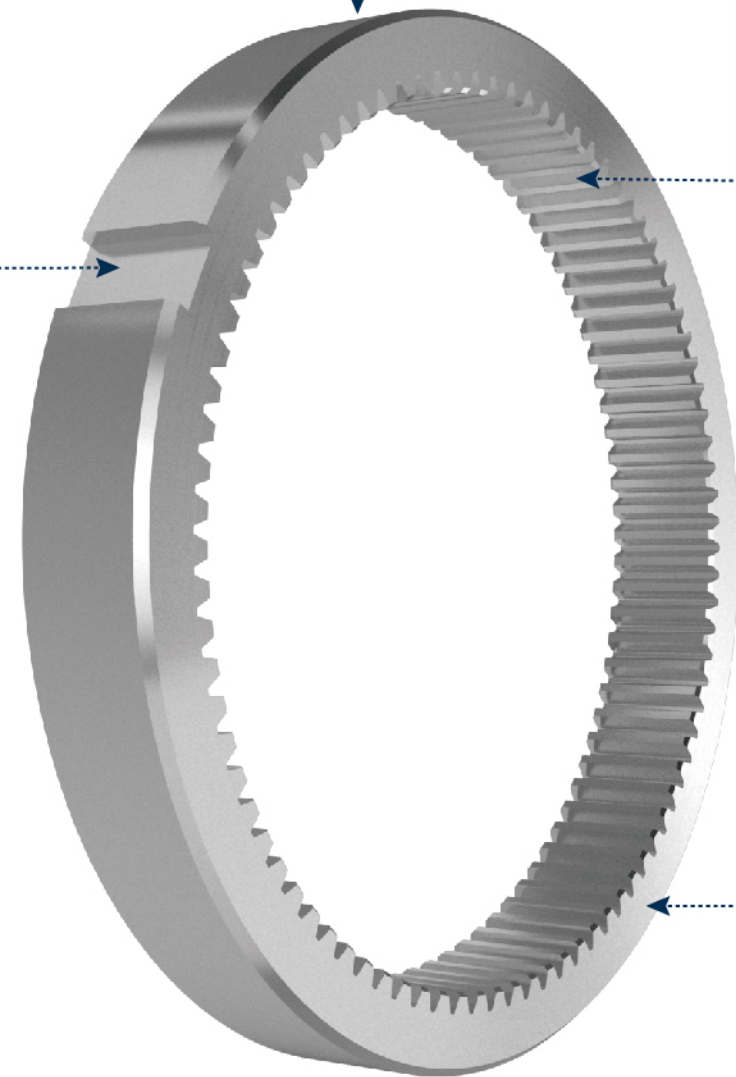
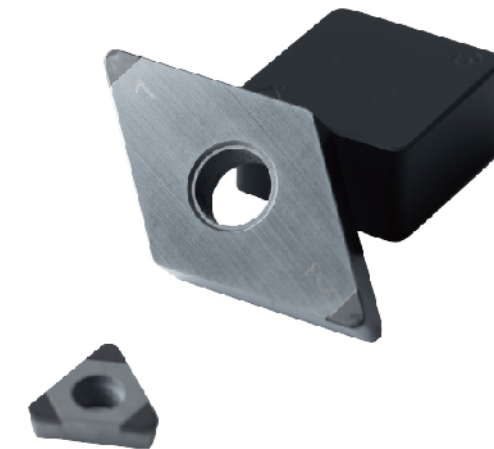
**键槽加工
Keyway Milling**

- **SP210/PP300**
普通钢高效加工立铣刀
High Efficiency Endmill for Steel



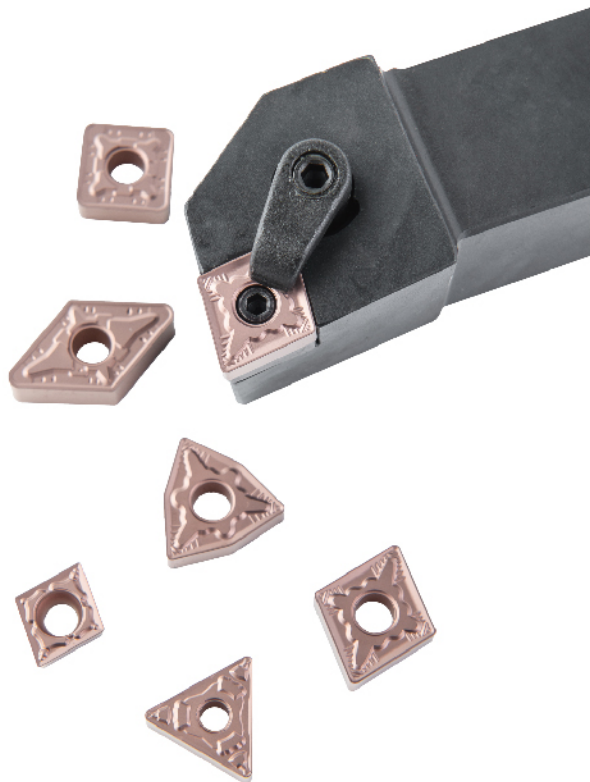
**外圆端面车削(热处理后)
External Surface Turning
(After Annealing)**

- **PCBN-YP系列**
PCBN-YP Series
超硬车削刀具
Hardened Turning Tools



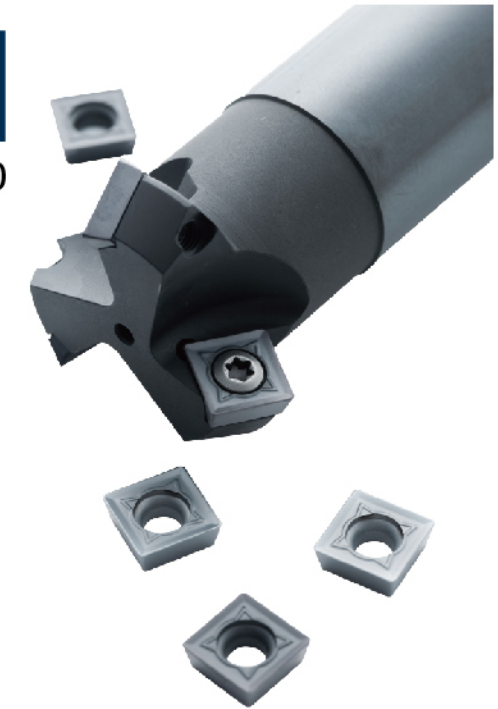
**外圆及端面车削
External Surface Turning**

- 负型Q系列+GPT6100系列
Negative Q Insert Series+GPT6100 Grade Series
GE.FORCE全新钢材高效车削刀具
Newly Developed GE.FORCE High Efficiency
Turning Tool for Steel



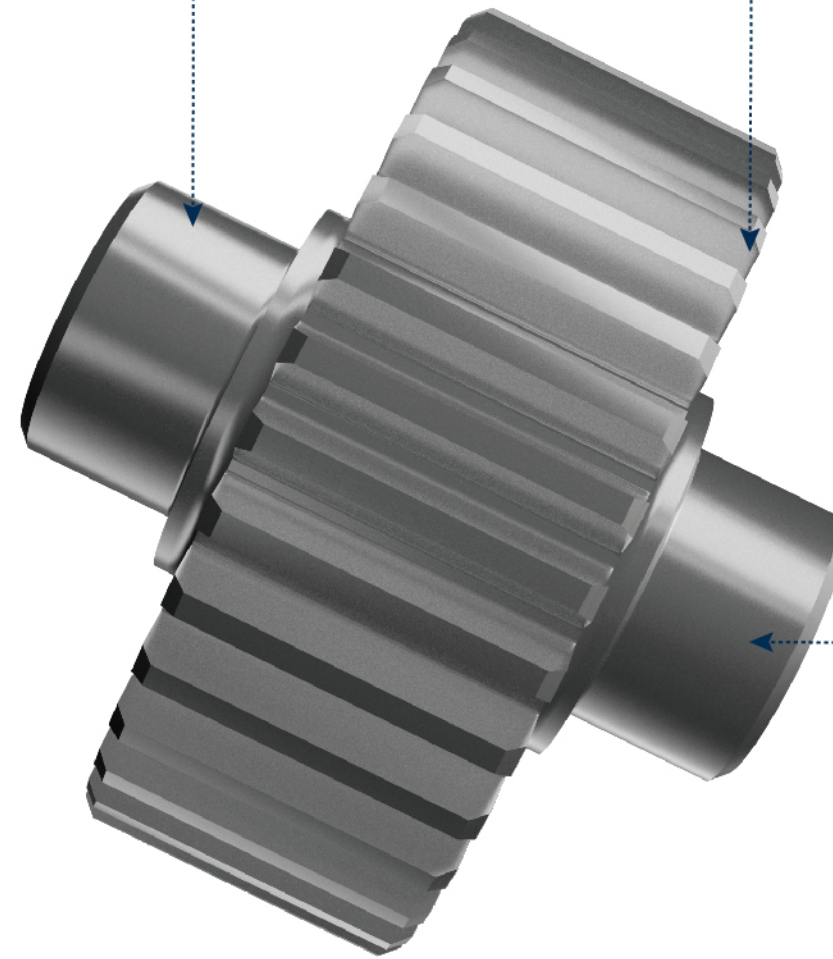
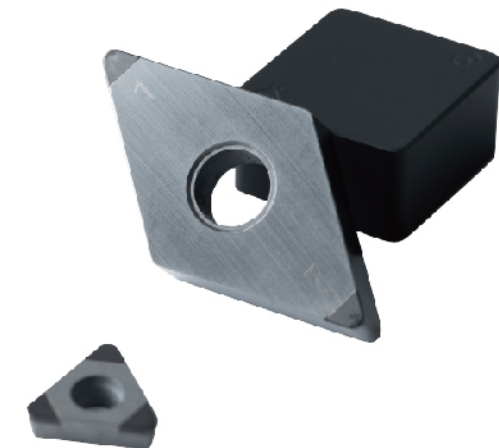
**倒角铣削
Chamfer Milling**

- SPMT+MCA130/145/160
倒角铣系列刀具
Chamfer Milling Tools Series



**外圆端面车削(热处理后)
External Surface Turning
(After Annealing)**

- PCBN-YP系列
PCBN-YP Series
超硬车削刀具
Hardened Turning Tools



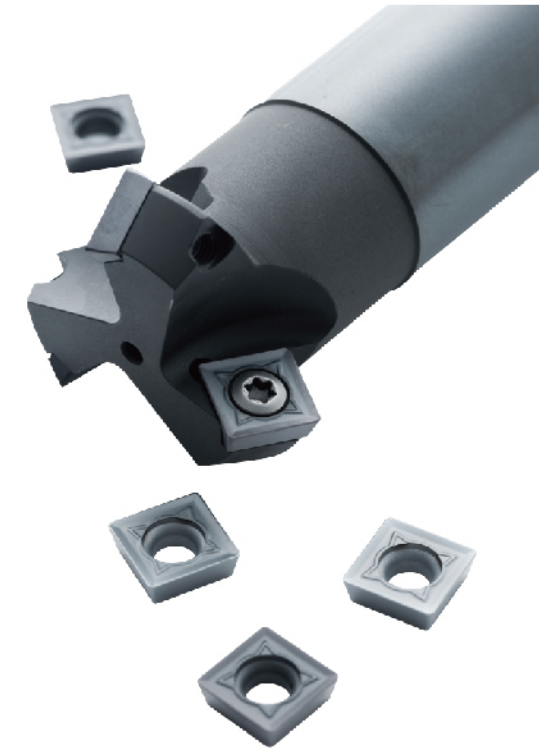
外圆及端面车削 External Surface Turning

- 负型Q系列+GPT6100系列
Negative Q Insert Series+GPT6100 Grade Series
GE.FORCE全新钢材高效车削刀具
Newly Developed GE.FORCE High Efficiency Turning Tool for Steel



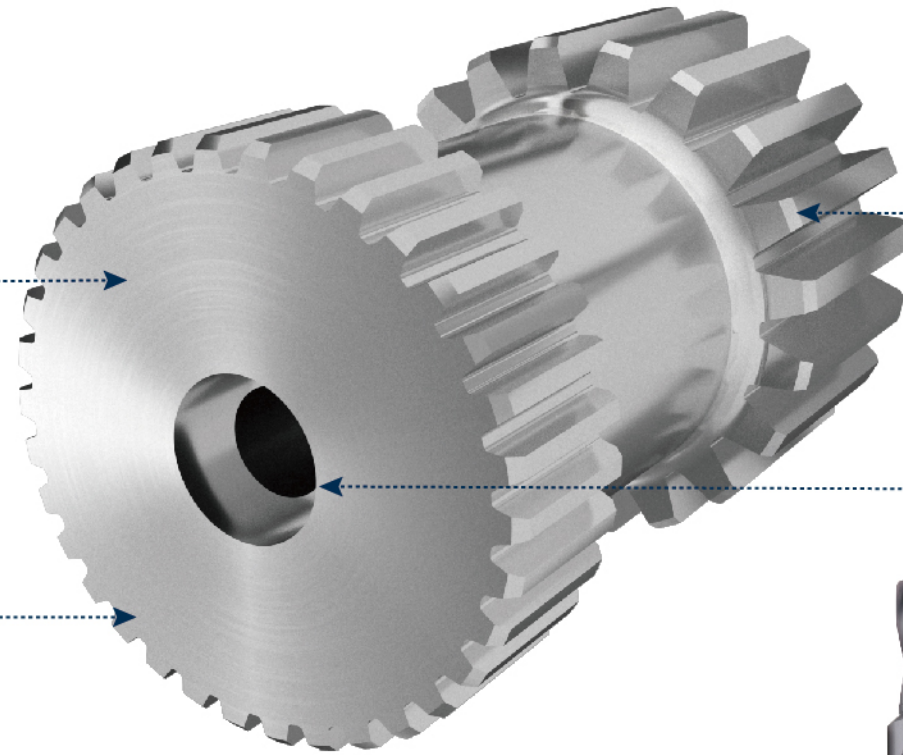
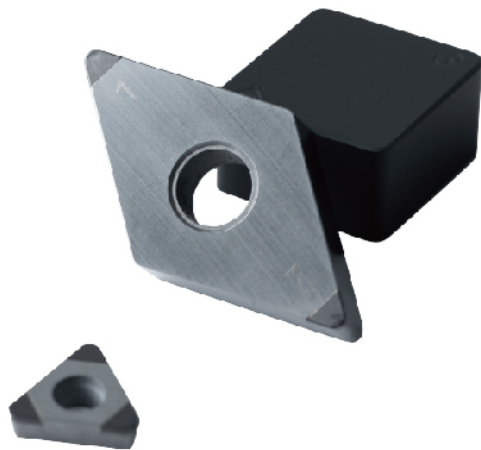
倒角铣削 Chamfer Milling

- SPMT+MCA130/145/160
可转位倒角铣系列刀具
Chamfer Milling Tools Series



外圆端面车削 (热处理后) External Surface Turning (After Annealing)

- PCBN-YP系列
PCBN-YP Series
超硬车削刀具
Hardened Turning Tools



孔加工 Hole Making

- D938
普通钢加工硬质合金麻花钻
Solid Carbide Twist Drill for Steel
- QPMG+GHD-S
高效可转位钻头
High Efficiency Indexable Drill



