

## 高品质保证 Quality Assurance

- 先进的生产技术和国际一流的生产线,主要生产设备包括高精压机和高稳定性的低压烧结炉。  
Equipped with advanced production technology and world-leading production lines, and main production equipment including high precision pressing machine and low pressure sintering furnace with high stability.

Equipped with advanced production technology and world-leading production lines, and main production equipment including high precision pressing machine and low pressure sintering furnace with high stability.

- 合金材质均匀、耐磨损耐腐蚀性好、抗冲击韧性高,广泛用于岩石、水井等掘孔领域。  
With good abrasion resistance, excellent corrosion resistance and high impact resistance, our carbide is uniform material and widely used in drilling field of rock, water wells and so on.

With good abrasion resistance, excellent corrosion resistance and high impact resistance, our carbide is uniform material and widely used in drilling field of rock, water wells and so on.

- 金鹭公司已获得中国CQC和挪威DNV的ISO9001:2000的质量管理体系认证及ISO14001环境管理体系认证。  
GESAC acquired CQC certification and ISO9001:2000 quality management system certified by Norway DNV and ISO14001 environmental management system.

GESAC acquired CQC certification and ISO9001:2000 quality management system certified by Norway DNV and ISO14001 environmental management system.



# 厦门金鹭

## 潜孔钻及钎头用齿

### BUTTONS FOR DTH TOP HAMMER



### 厦门金鹭特种合金有限公司

地址: 中国厦门市湖里区兴隆路69号

工厂地址: 中国福建省厦门市集美北部工业区天阳路52-60号

电话: +86-592-2650635

传真: +86-592-6106023

邮编: 361021

电邮: gesac@cxtc.com

网址://www.gesac.com.cn

### XIAMEN GOLDEN EGRET SPECIAL ALLOY CO.,LTD.

Add.:No.69 Xinglong Road Huli Xiamen China

Factory Add.: No.52-60,Tianyang Road,Jimei, Xiamen,Fujian,China.

Tel: +86-592-2650635

Fax: +86-592-6106023

P.C.:361021

Email: gesac@cxtc.com

Http://www.gesac.com.cn



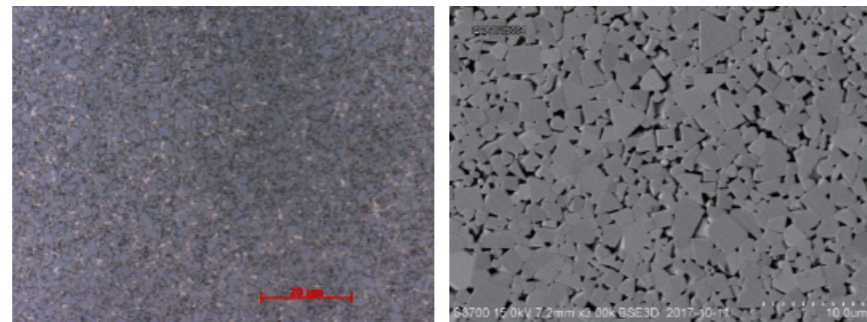
BSC202001a



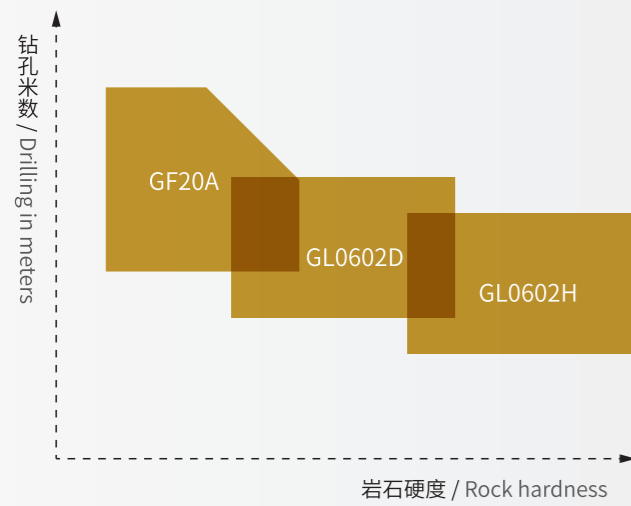
牌号介绍 Grade Introduction

牌号 Grade	Co%	HRA	D g/cm <sup>3</sup>	TRS N/mm <sup>2</sup>	Grain Size μm	锥度钎头 Tapered Drilling Tool	螺纹钎头 Thread Drill Bits	潜孔钻 DTH Bits	
								高压 High DTH	中低压 Medium & Low DTH
GL0602H	6.0	90.4-91.0	14.95	>3000	1.0~1.5	•	•	•	•
GL0602D	6.0	90.0-90.6	14.95	>2800	1.0~1.5			•	•
GF20A	6.0	90.0-91.0	14.95	>2800	1.0~1.5	•			•

- 优化组织结构, 提升产品稳定性  
Optimize the organizational structure, improve product stability.
- 调整WC粒度分布, 平衡韧性与耐磨性  
Adjust the WC particle size distribution, balance the toughness and abrasion resistance.
- 消除结构性缺陷, 提升产品质量高度  
Eliminate structural defects, improve product quality level.



应用范围 Application Range



各牌号从原料选择及制造工艺的不同, 实现不同岩石硬度下均具有优异的破岩性能。  
With different raw material and manufacturing process, our grades have excellent rock breaking properties to cope with different rock hardness.

应用案例 Application case

编号 Case	应用类型 Application Type	岩层 Rock Formation	岩层硬度 Hardness	岩石种类 Rock Type	钻头型号 Bit Type	风压 Wind Pressure	单杆钻速 Drilling Rate
1	高压潜孔钻 H-DTH	高硬岩层 High Hardness	F>14	辉钼矿 Molybdenite	D140	2.0-2.2MPa	10-12min/杆

编号 Case	应用类型 Application Type	岩层 Rock Formation	岩层硬度 Hardness	岩石种类 Rock Type	钻头型号 Bit Type	旋转压力 Rotating Pressure	冲击压力 Surge Pressure	推进压力 Boost Pressure	单杆钻速 Drilling Rate
2	螺纹钎头 TH	高硬岩层 High Hardness	F16-F18	赤铁矿 Hematite	45-R32	4.0-6.0Mpa	7Mpa	20Mpa	3-5min/杆

编号 Case	应用类型 Application Type	岩层 Rock Formation	岩层硬度 Hardness	岩石种类 Rock Type	钻头型号 Bit Type	风压 Wind Pressure	单杆钻速 Drilling Rate
3	高压潜孔钻 H-DTH	中硬岩层 Medium Hardness	F10-F12	磁铁矿 Magnetite	D138	1.8-2.0MPa	6-8min/杆

编号 Case	应用类型 Application Type	岩层 Rock Formation	岩层硬度 Hardness	岩石种类 Rock Type	钻头型号 Bit Type	风压 Wind Pressure	单杆钻速 Drilling Rate
4	低压潜孔钻 L-DTH	中软岩层 Soft	F6-F8	石灰岩 limestone	D115	1.4-1.6MPa	4-6min/杆